

Underground Utility



Why do Underground Utility Mapping?

We are able to trace, indentifiy and map underground utilities and service routes including gas, water, telecommunications, electricity and drainage.

Depth 0 -15 meters

Any type of services (HV cables, Fiber Optics, Drainage & Sewer Pipes, Water conduits, Gas Pipes, Live & dead Cabels....etc.)

Liquid Leak detection

All utilities attributes as depth, direction, type, material and status

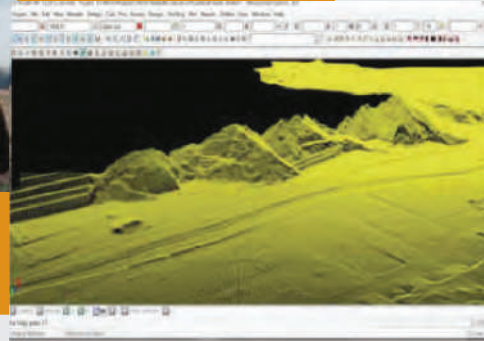
Assess layers' condition and thickness

Outputs: BIM, DWG, DGN, KML and SHP formats

Accuracy ± 3 mm horizontally and ± 30 vertically



Drone Survey



Why do drone Survey?

Creates highly-accurate orthophotos and digital elevation models

Provides scheduled and on-demand aerial data collection

Simplifies the surveying process with pre-defined missions

Land Surveying, Urban Planning and Land Management

Construction & Earth Work

Mininig, quarries & aggregates

Archaeology

Collect unlimited aerial and precise measurments, while saving time, money and manpower. Also, support critical processes such as stock pile volume measurments, terrain mapping, site planning and more.

3D Laser Scanning & BIM



3D Laser Scanning is an ideal technology for Building Information Modeling (BIM) due to its efficiency, accuracy, and level of detail. Laser Scanning accurately documents as-built conditions and proves to be invaluable in facility asset management and modifications. Laser Scanning can also be used for reality capture and augmented reality in many aspects of architecture, construction and engineering.

Why 3d Laser Scanning?

High speed Data Capture

Greater accuracy compared with traditional methods

Available as a fully workable 3D model

