
alurays_

LIGHTING TECHNOLOGY

Catalogue

About Us

At Alurays, we innovate tailor-made lighting solutions.

We offer a comprehensive portfolio of products and services, owing to more than 30 years of expertise. We develop and manufacture high-quality, easy-to-handle and robust LED profile systems. Our specialties are custom-made lighting solutions with highly resilient IP67 outdoor products, designed and tested for the heat, dust and humidity of the Middle East region.

Alurays Lighting Technology GmbH was established by Dominik Sacher in 2004 in Planegg, Germany. In 2013, Walter Ziegler joined forces with Alurays, following his tenure as CEO of Tridonic (Zumtobel Group), one of the largest international lighting manufacturers, for over a decade. To cater to the demand of regional markets, Alurays expanded its production internationally, with facilities in India as of 2016 to serve South Asia, and another factory established in Qatar in 2017 for the MENA region.

The Team

Germany



Dominik Sacher
CEO



Professor André Zibell
CTO



Marina Richter
Export Manager

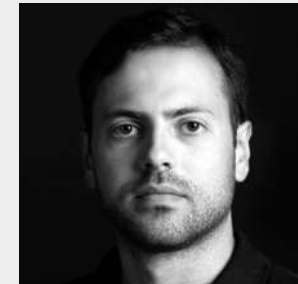
Qatar



Nasser Al Naimi
Chairman



Osama Al Achek
Managing Partner



Feras MN Abdul Majid
Operations Manager

India



Saumil Chandiwalla
Director

Our Products, Your Way

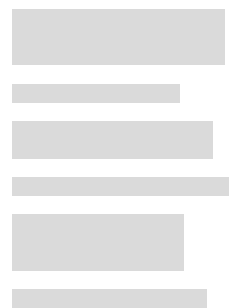
Anywhere

From residential lighting to visionary projects, our expertise can help you add the finishing touch to any venture.



Any Profile

Proprietary aluminium profiles in different widths and lengths suitable for most applications – and custom-made designs for anything else.



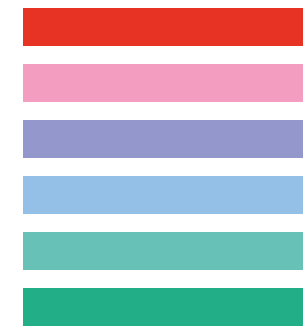
Any Light

An extensive product range offering solutions for uniform lighting or accentuated effects across a variety of interior and exterior applications.



Any Colour

The entire spectrum of light at your disposal – choose from our standard or tailor-made lighting control solutions.



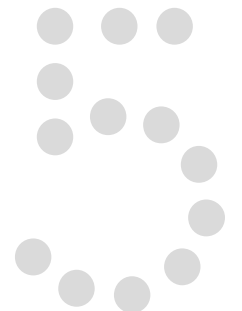
Any Form

Straight, curved or circular – a perfect fit for any space.



Our Guarantee

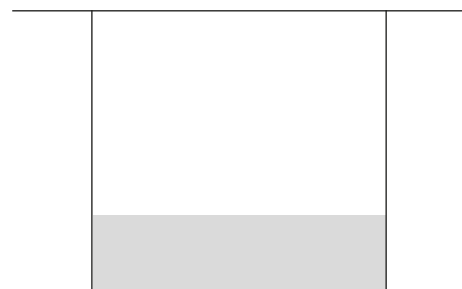
Designed and produced to the highest standards, our products are backed by a minimum 5-year warranty.



Our profiles

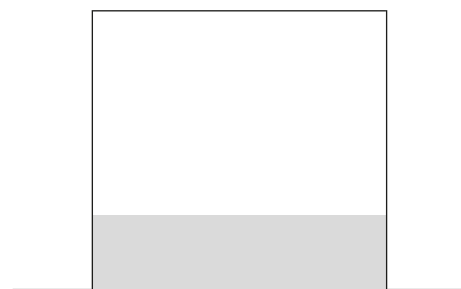
Surface Mounted

Our broad portfolio of standard profiles cover many interior and exterior applications.



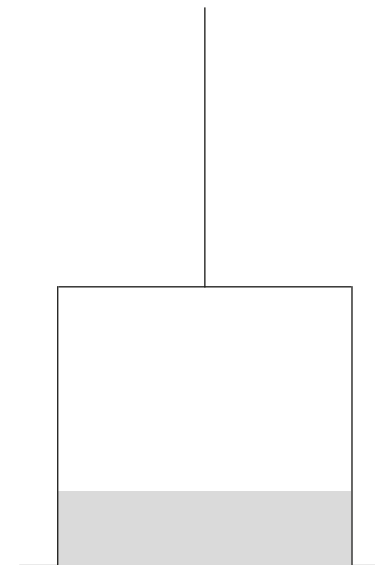
Recessed Mounted

These profiles can be mounted into ceilings, walls and floors for sleek, seamless integration.



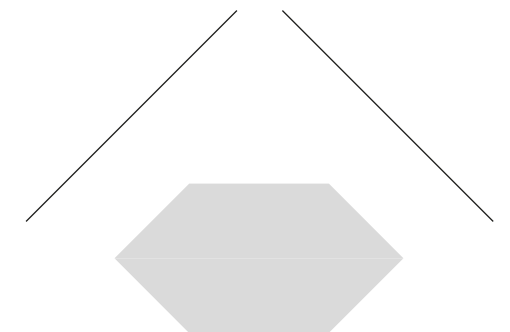
Pendants

Cable-suspended profiles – for high-ceiling areas and creative designs.



Custom Made

Beyond our standard range, we have developed numerous bespoke products to create unique lighting solutions



Our Luminaires

Our Know-How, Your Vision

For Alurays, close cooperation with clients begins with in-depth lighting design knowledge. At every step, we work with you to deliver a jointly developed, personalised result.

Light & Power

Upon request, we can configure:

- Colour Reference Index (CRI)
- Correlated Colour Temperature (CCT)
- Colour Hue (RGB, RGBW and tuneable white)
- Voltage/Power
- Luminous Flux

Resin-Encapsulated Protection

Our specialised exterior products are encapsulated in lighting-grade resin, which provides IP67 protection against dust and water, ensuring maintenance-free operation – even in the harsh desert environment. With its anti-yellowing UV resistant properties, light-loss factors are kept to a minimum.

Optics

Products are offered with homogeneous or accentuated lighting, for both interior and exterior applications.

Beam options:

- Wide beam
- Medium beam
- Narrow beam
- Asymmetrical beam



Products

Sama

Seamless, uninterrupted linear light.

This series is made from resin-encapsulated linear aluminium profiles, with a dot-free lighting surface.

The light extends up to the edge of the profile, allowing for a consistent, continuous appearance when multiple units are joined end to end.

Available as recessed, surface-mounted or pendant profiles, the plug-and-play connectors allow for quick and simple installation.

Outdoor

Sama's outdoor lighting range is UV-resistant, ensuring excellent water- and weather-proofing, particularly heat, humidity and dust. The plug-and-play connectors are also waterproofed for an especially robust product. This range is particularly suited for direct-view lighting on building façades, as well as a host of other applications.

Common Applications

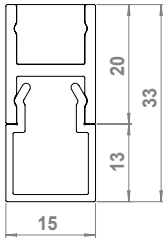
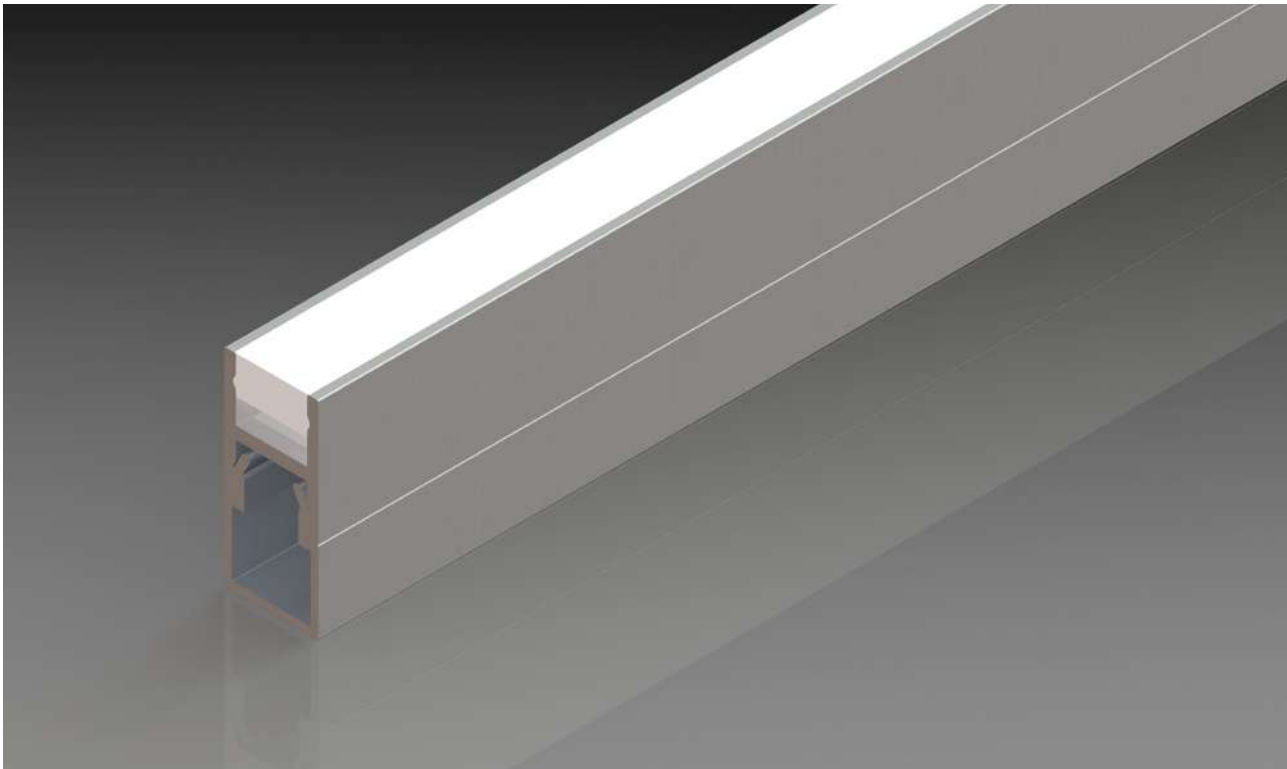
- Direct-view façade lights
- Parking lots
- Cove lights
- Walkways

Indoor

Sama's indoor range is suitable for a variety of spaces and applications, from residential to industrial. The light is diffused using an acrylic PMMA diffuser with anti-yellowing properties.

Common Applications

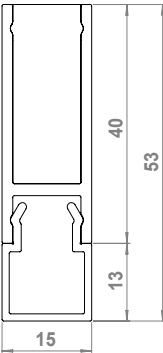
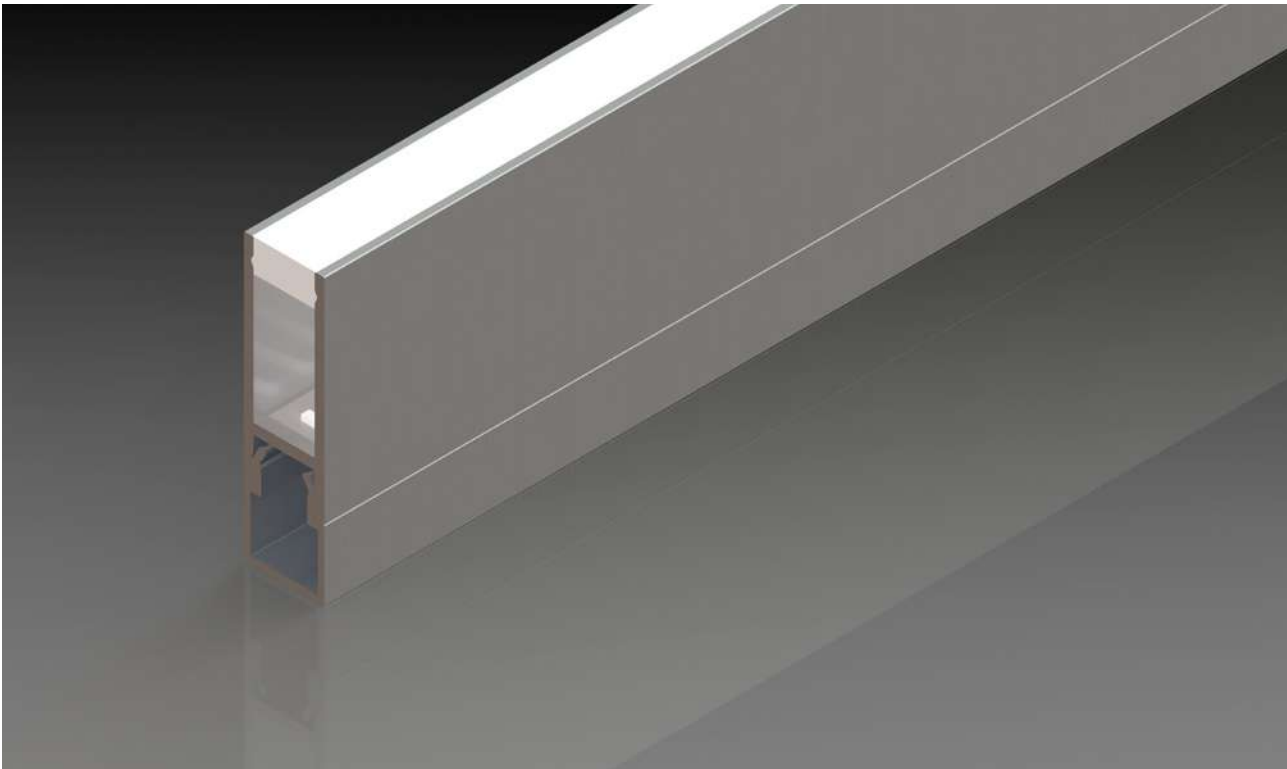
- Office spaces
- Retail
- Residential
- Restaurants
- Industrial



Sama 1533

Wattage (W/m)	Dimensions (mm)	Mounting	CCT	CRI*
<div><div>• 14.4</div><div>• 19.2</div></div>	15×33	<div><div>• Recessed</div><div>• Surface</div><div>• Pendant</div></div>	<div><div>• 3000K</div><div>• 3500K</div><div>• 4000K</div><div>• 5000K</div></div>	<div><div>>80, >90</div><div>*CRI is not applicable for RGB/W</div></div>

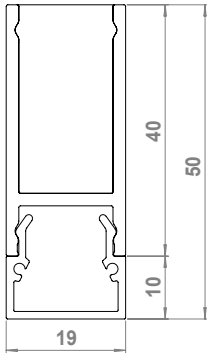
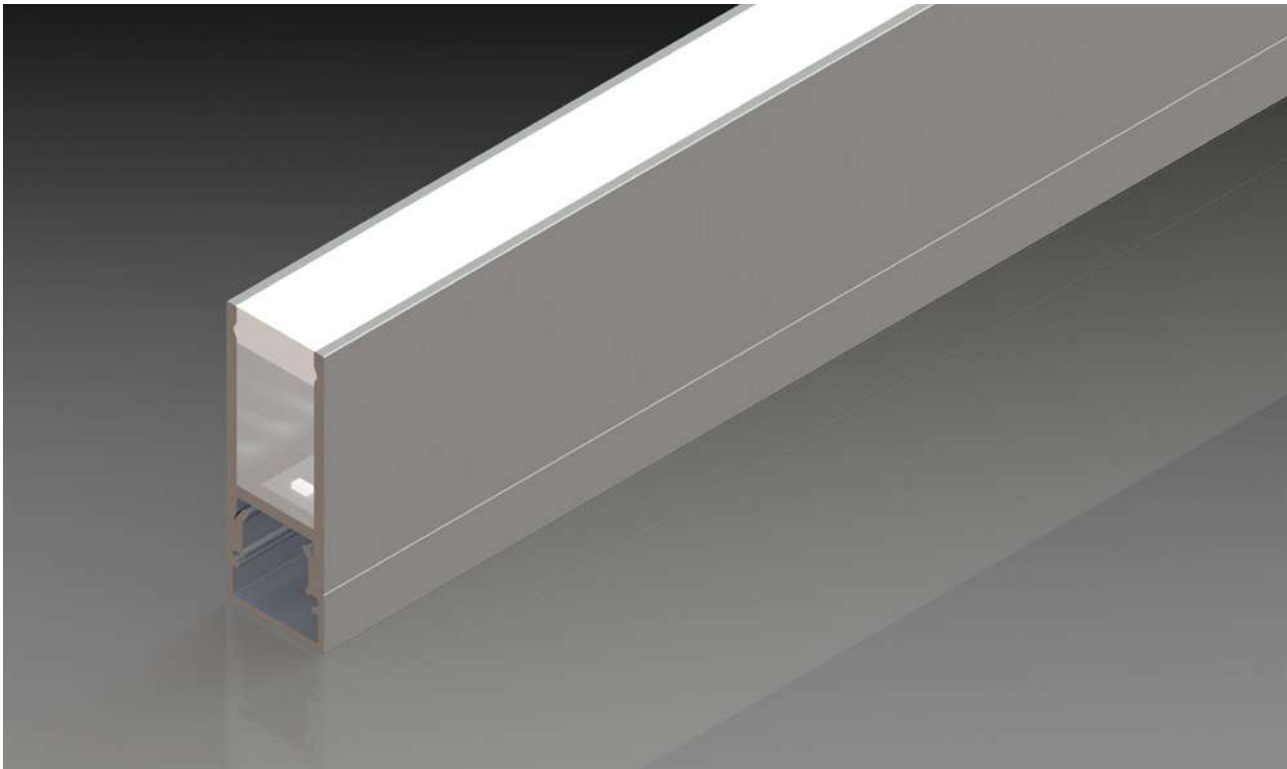
Optics	Voltage	Operating Temperature	Lifetime	Finish	Ingress Protection
Diffused	24V	-25°C to 55°C	>50,000 Hours	<div><div>• Anodized</div><div>• RAL</div></div>	IP67



Sama 1553

Wattage (W/m)	Dimensions (mm)	Mounting	CCT	CRI*
<div><div>• 4.8</div><div>• 9.6</div><div>• 14.4</div></div>	15×33	<div><div>• Recessed</div><div>• Surface</div><div>• Pendant</div></div>	<div><div>• 3000K</div><div>• 3500K</div><div>• 4000K</div><div>• 5000K</div><div>• RGB</div><div>• RGBW</div><div>• TW(3000K-5500K)</div></div>	<div><div>>80, >90</div><div>*CRI is not applicable for RGB/W</div></div>

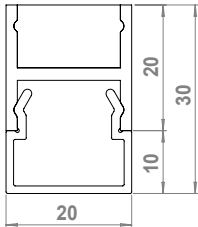
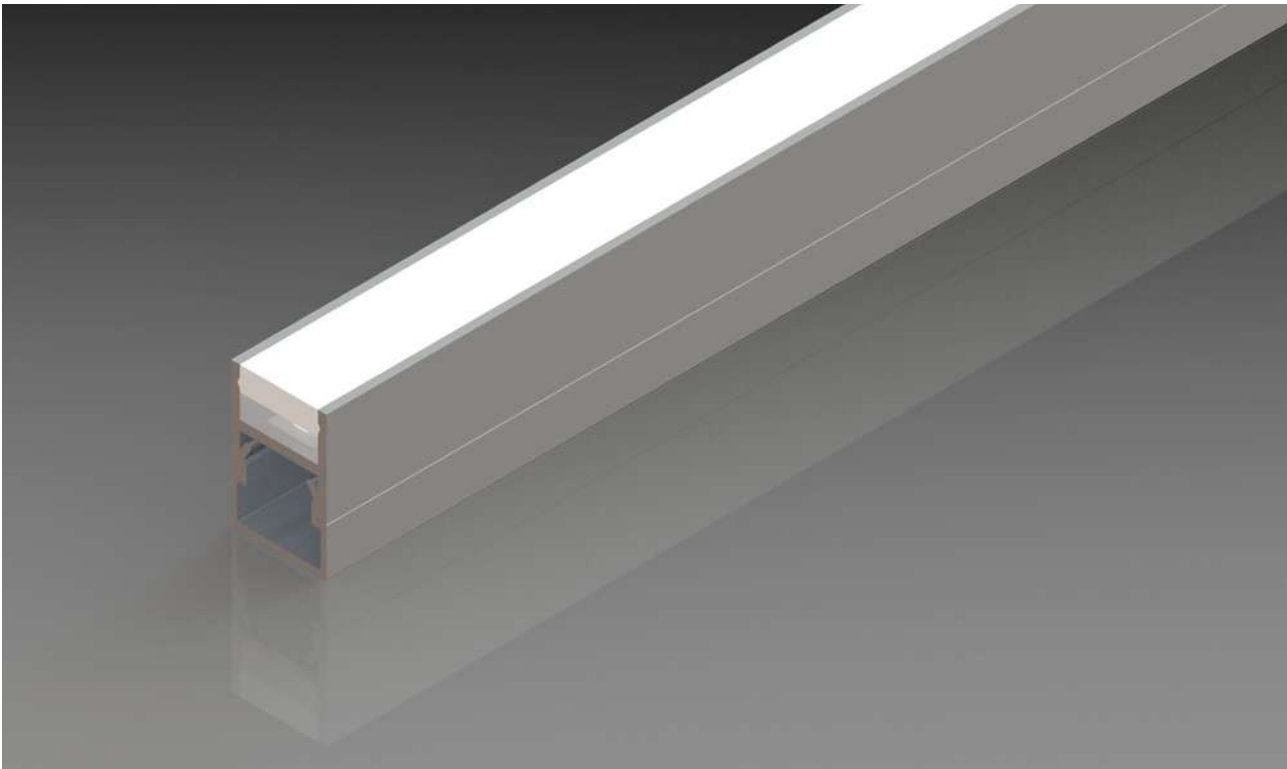
Optics	Voltage	Operating Temperature	Lifetime	Finish	Ingress Protection
Diffused	24V	-25°C to 55°C	>50,000 Hours	<div><div>• Anodized</div><div>• RAL</div></div>	IP67



Sama 1950

Wattage (W/m)	Dimensions (mm)	Mounting	CCT	CRI*
<div><div>• 4.8</div><div>• 9.6</div><div>• 14.4</div></div>	19×50	<div><div>• Recessed</div><div>• Surface</div><div>• Pendant</div></div>	<div><div>• 3000K</div><div>• 3500K</div><div>• 4000K</div><div>• 5000K</div><div>• RGB</div><div>• RGBW</div><div>• TW(3000K-5500K)</div></div>	<div><div>>80, >90</div><div>*CRI is not applicable for RGB/W</div></div>

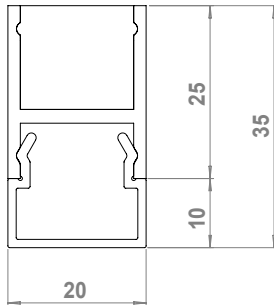
Optics	Voltage	Operating Temperature	Lifetime	Finish	Ingress Protection
Diffused	24V	-25°C to 55°C	>50,000 Hours	<div><div>• Anodized</div><div>• RAL</div></div>	IP67



Sama 2030

Wattage (W/m)	Dimensions (mm)	Mounting	CCT	CRI*
<div><div>• 14.4</div><div>• 19.2</div></div>	20×30	<div><div>• Recessed</div><div>• Surface</div><div>• Pendant</div></div>	<div><div>• 3000K</div><div>• 3500K</div><div>• 4000K</div><div>• 5000K</div></div>	<div><div>>80, >90</div><div>*CRI is not applicable for RGB/W</div></div>

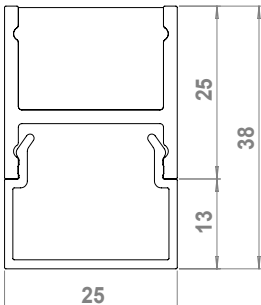
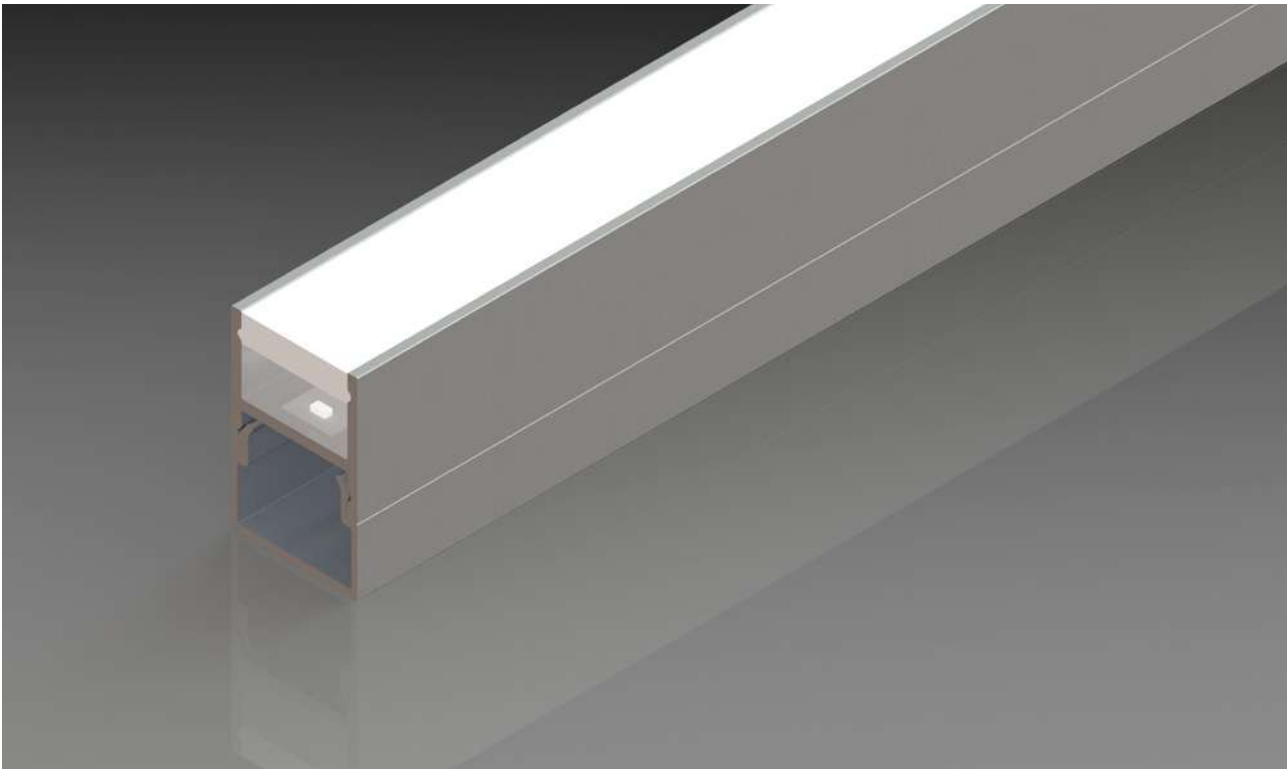
Optics	Voltage	Operating Temperature	Lifetime	Finish	Ingress Protection
Diffused	24V	-25°C to 55°C	>50,000 Hours	<div><div>• Anodized</div><div>• RAL</div></div>	IP67



Sama 2035

Wattage (W/m)	Dimensions (mm)	Mounting	CCT	CRI*
<div><div>• 14.4</div><div>• 19.2</div></div>	20×35	<div><div>• Recessed</div><div>• Surface</div><div>• Pendant</div></div>	<div><div>• 3000K</div><div>• 3500K</div><div>• 4000K</div><div>• 5000K</div><div>• RGB</div><div>• RGBW</div><div>• TW(3000K-5500K)</div></div>	<div><div>>80, >90</div><div>*CRI is not applicable for RGB/W</div></div>

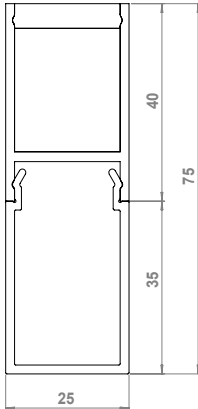
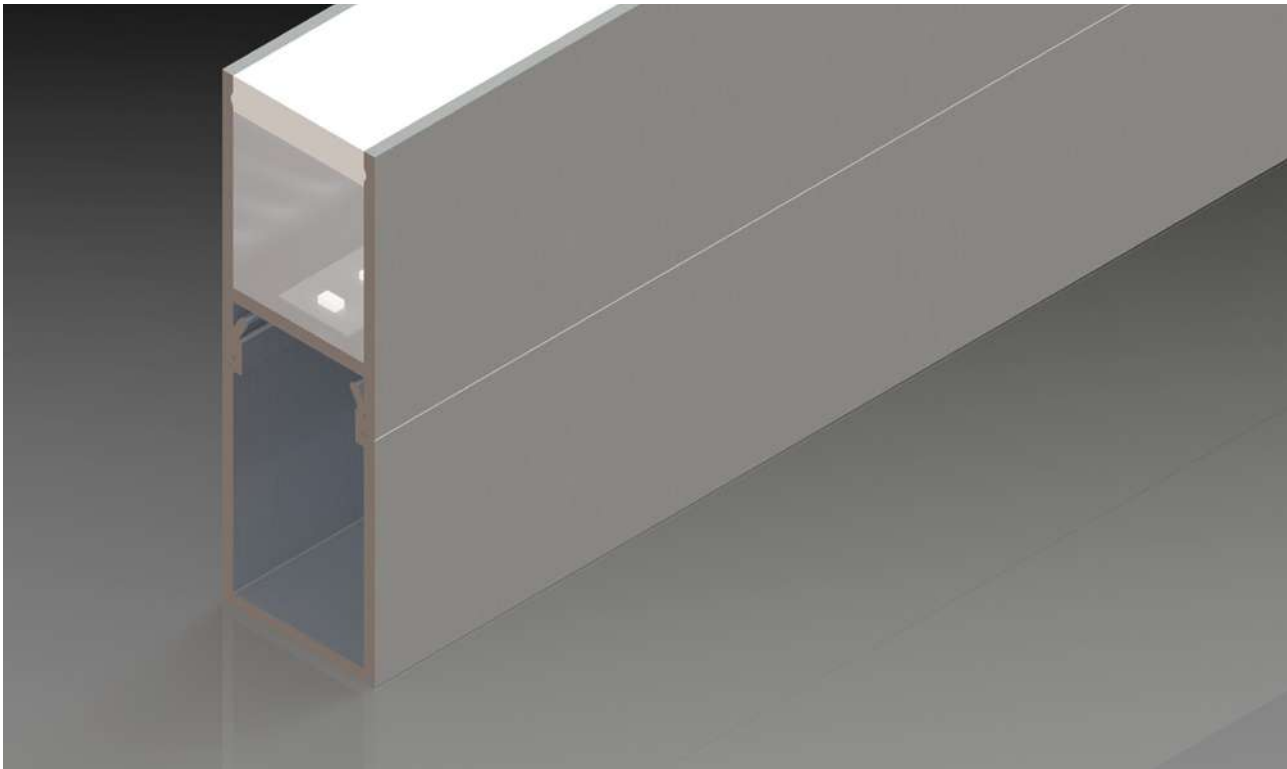
Optics	Voltage	Operating Temperature	Lifetime	Finish	Ingress Protection
Diffused	24V	-25°C to 55°C	>50,000 Hours	<div><div>• Anodized</div><div>• RAL</div></div>	IP67



Sama 2538

Wattage (W/m)	Dimensions (mm)	Mounting	CCT	CRI*
<div><div>• 14.4</div><div>• 19.2</div></div>	25×38	<div><div>• Recessed</div><div>• Surface</div><div>• Pendant</div></div>	<div><div>• 3000K</div><div>• 3500K</div><div>• 4000K</div><div>• 5000K</div></div>	<div><div>>80, >90</div><div>*CRI is not applicable for RGB/W</div></div>

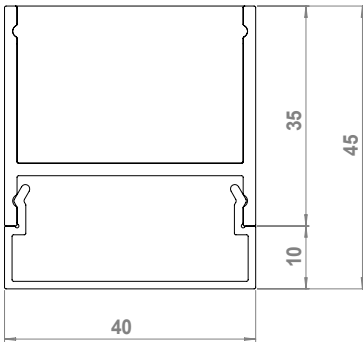
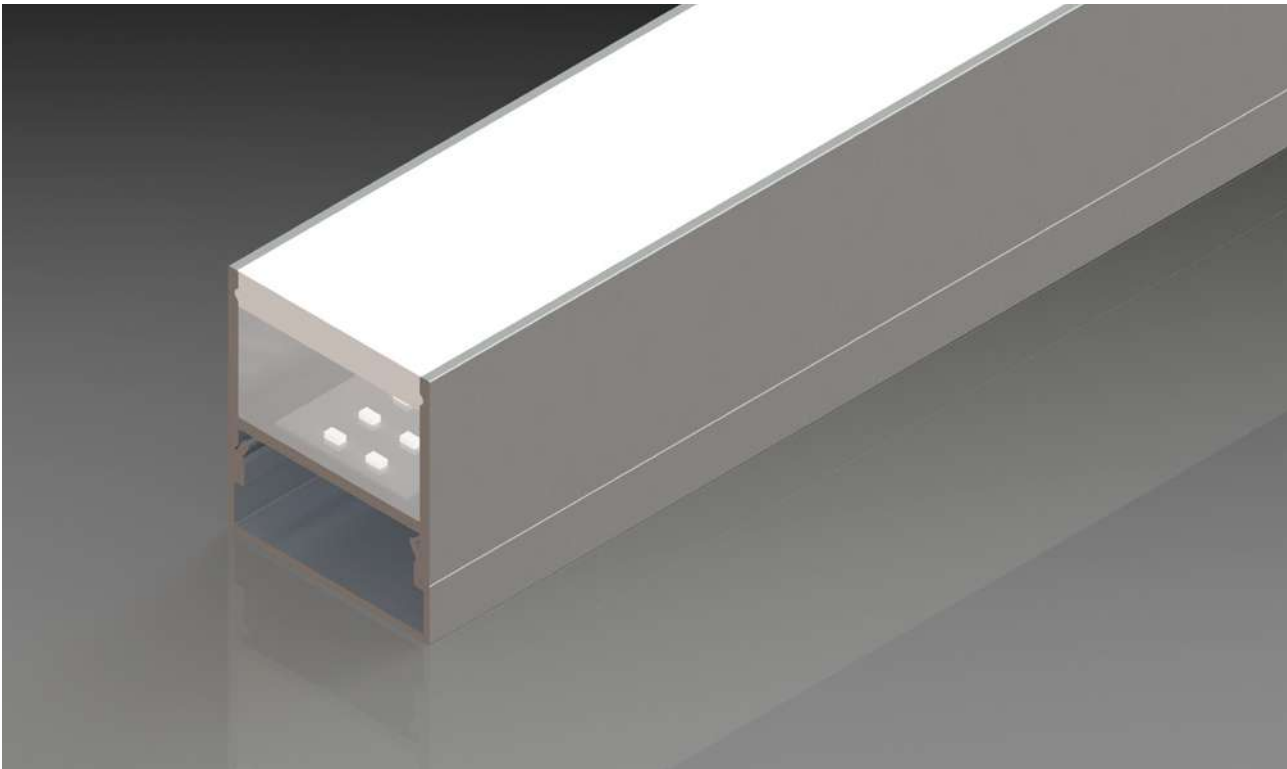
Optics	Voltage	Operating Temperature	Lifetime	Finish	Ingress Protection
Diffused	24V	-25°C to 55°C	>50,000 Hours	<div><div>• Anodized</div><div>• RAL</div></div>	IP67



Sama 2575

Wattage (W/m)	Dimensions (mm)	Mounting	CCT	CRI*
<div><ul style="list-style-type: none">• 4.8• 9.6• 14.4• 28.8</div>	25×75	<div><ul style="list-style-type: none">• Recessed• Surface• Pendant</div>	<div><ul style="list-style-type: none">• 3000K• 3500K• 4000K• 5000K• RGB• RGBW• TW(3000K-5500K)</div>	<div>>80, >90</div> <div><small>*CRI is not applicable for RGB/W</small></div>

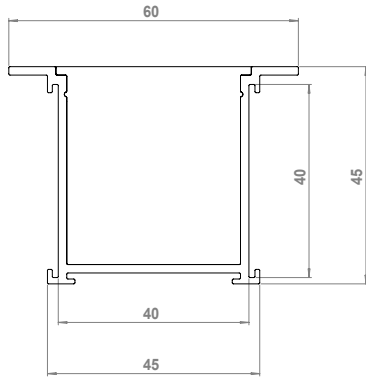
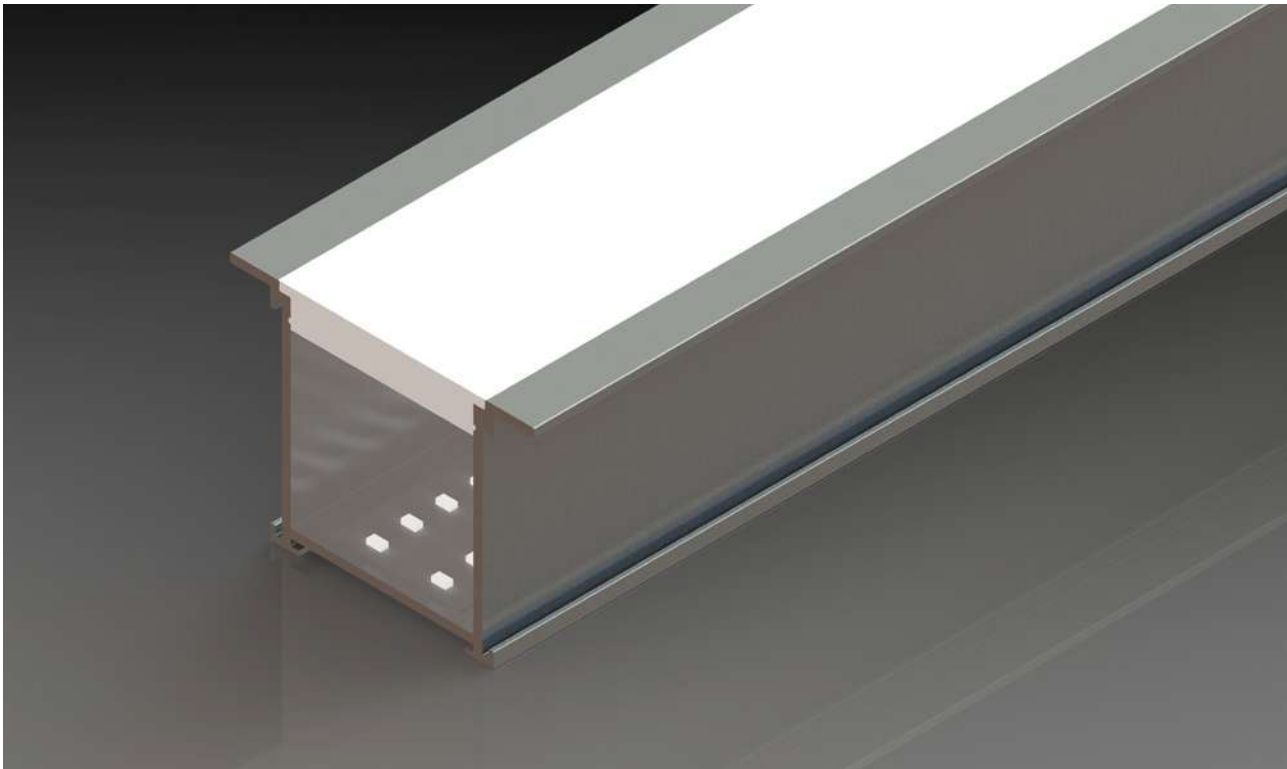
Optics	Voltage	Operating Temperature	Lifetime	Finish	Ingress Protection
Diffused	24V	-25°C to 55°C	>50,000 Hours	<div><ul style="list-style-type: none">• Anodized• RAL</div>	IP67



Sama 4045

Wattage (W/m)	Dimensions (mm)	Mounting	CCT	CRI*
<div><ul style="list-style-type: none">• 19.2• 28.8• 38.4• 57.6</div>	40×45	<div><ul style="list-style-type: none">• Recessed• Surface• Pendant</div>	<div><ul style="list-style-type: none">• 3000K• 3500K• 4000K• 5000K• RGB• RGBW• TW(3000K-5500K)</div>	<div>>80, >90</div> <div><small>*CRI is not applicable for RGB/W</small></div>

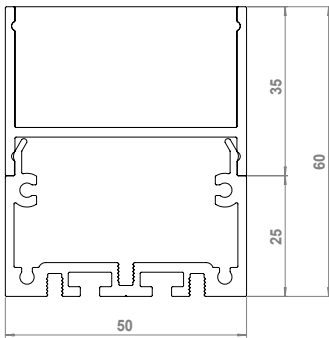
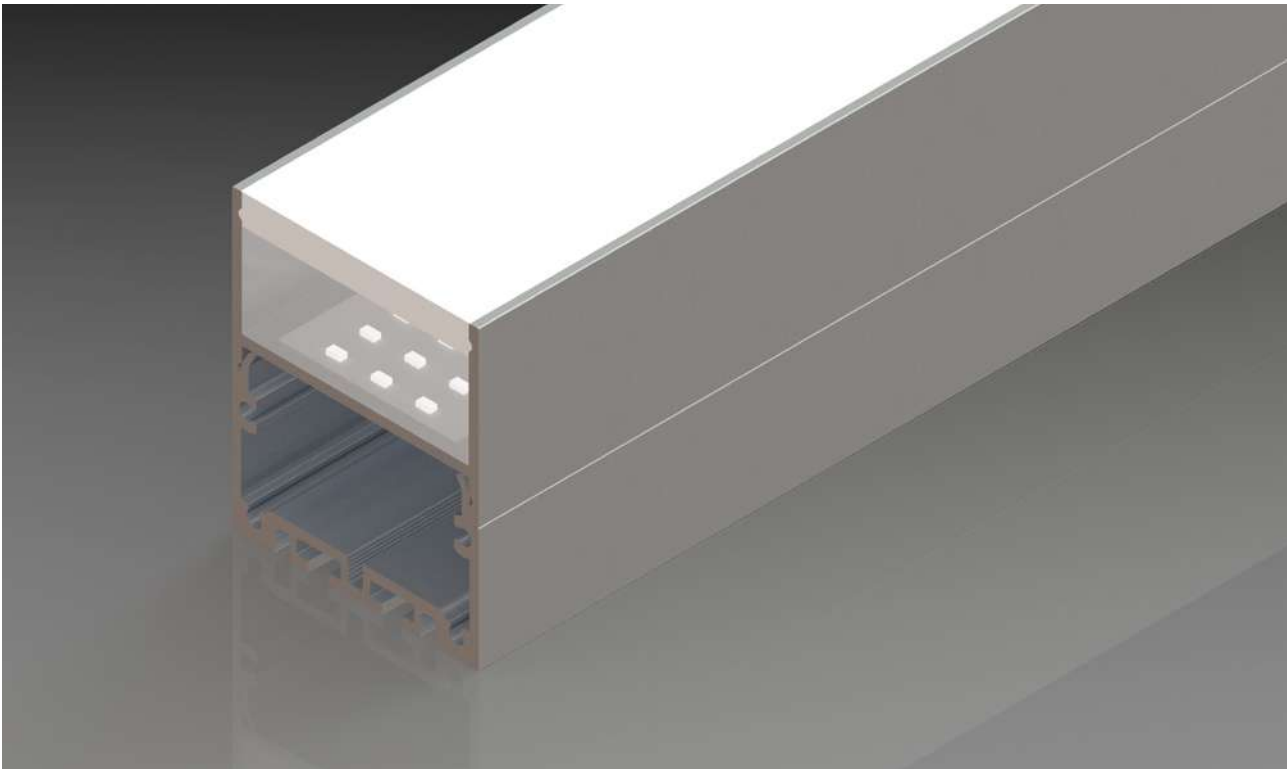
Optics	Voltage	Operating Temperature	Lifetime	Finish	Ingress Protection
Diffused	24V	-25°C to 55°C	>50,000 Hours	<div><ul style="list-style-type: none">• Anodized• RAL</div>	IP67



Sama 4040

Wattage (W/m)	Dimensions (mm)	Mounting	CCT	CRI*
<div><ul style="list-style-type: none">• 19.2• 28.8• 38.4• 57.6</div>	40×40	<div><ul style="list-style-type: none">• Recessed• Surface• Pendant</div>	<div><ul style="list-style-type: none">• 3000K• 3500K• 4000K• 5000K• RGB• RGBW• TW(3000K-5500K)</div>	<div>>80, >90</div> <div><small>*CRI is not applicable for RGB/W</small></div>

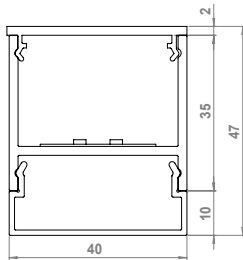
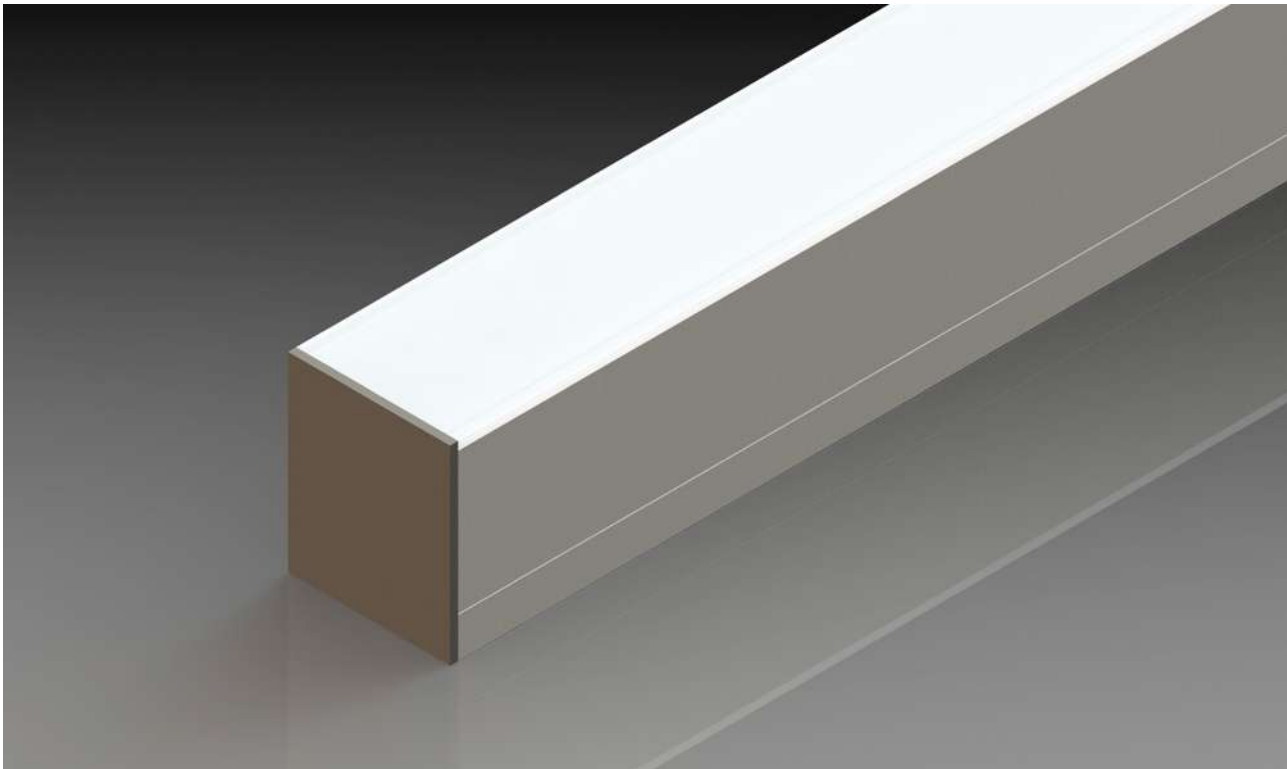
Optics	Voltage	Operating Temperature	Lifetime	Finish	Ingress Protection
Diffused	24V	-25°C to 55°C	>50,000 Hours	<div><ul style="list-style-type: none">• Anodized• RAL</div>	IP67



Sama 5060

Wattage (W/m)	Dimensions (mm)	Mounting	CCT	CRI*
<div><ul style="list-style-type: none">• 19.2• 28.8• 38.4• 57.6</div>	50×70	<div><ul style="list-style-type: none">• Recessed• Surface• Pendant</div>	<div><ul style="list-style-type: none">• 3000K• 3500K• 4000K• 5000K• RGB• RGBW• TW(3000K-5500K)</div>	<div>>80, >90</div> <div><small>*CRI is not applicable for RGB/W</small></div>

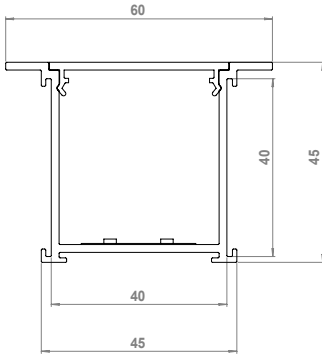
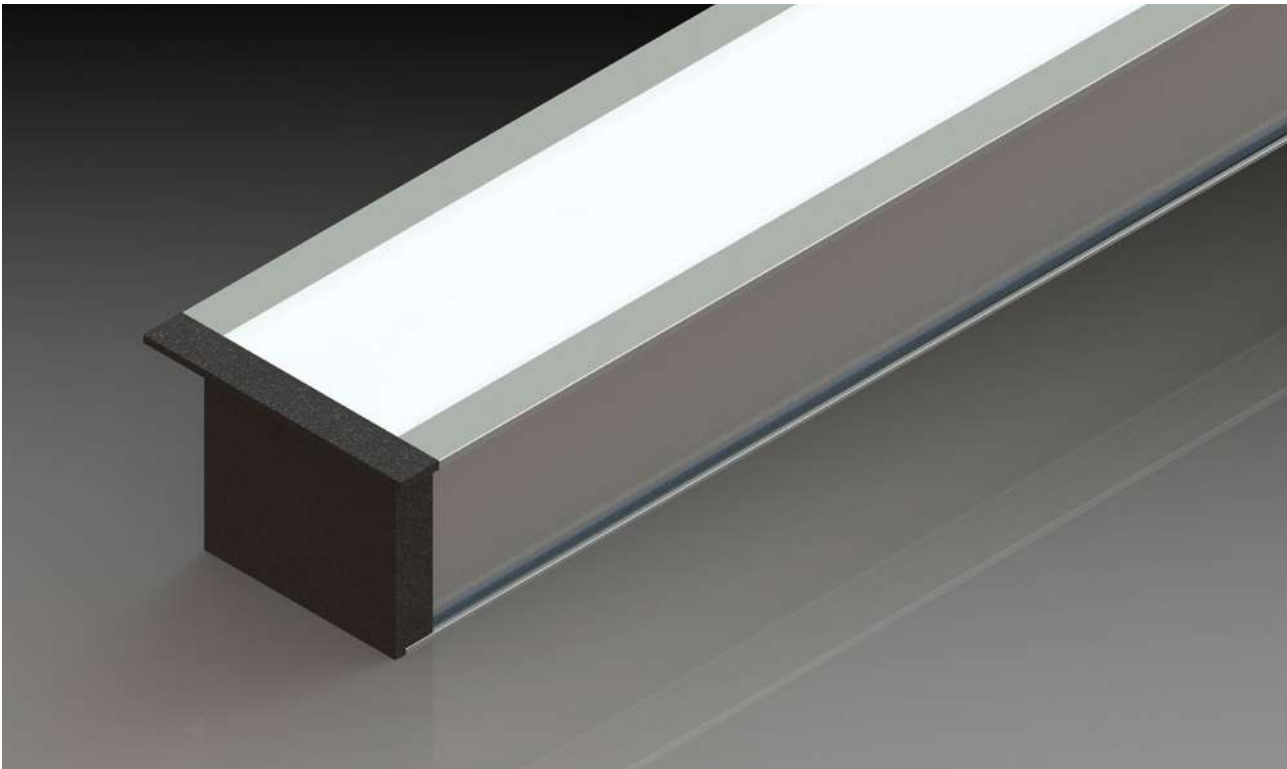
Optics	Voltage	Operating Temperature	Lifetime	Finish	Ingress Protection
Diffused	24V	-25°C to 55°C	>50,000 Hours	<div><ul style="list-style-type: none">• Anodized• RAL</div>	IP67



Sama 4045i

Wattage (W/m)	Dimensions (mm)	Mounting	CCT	CRI*
<div><div>• 19.2</div><div>• 28.8</div><div>• 38.4</div><div>• 57.6</div></div>	40×45	<div><div>• Recessed</div><div>• Surface</div><div>• Pendant</div></div>	<div><div>• 2700K</div><div>• 3000K</div><div>• 3500K</div><div>• 4000K</div><div>• 5000K</div><div>• RGB</div><div>• RGBW</div><div>• TW(3000K-5500K)</div></div>	<div><div>>80, >90</div><div>*CRI is not applicable for RGB/W</div></div>

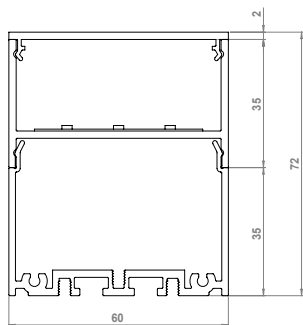
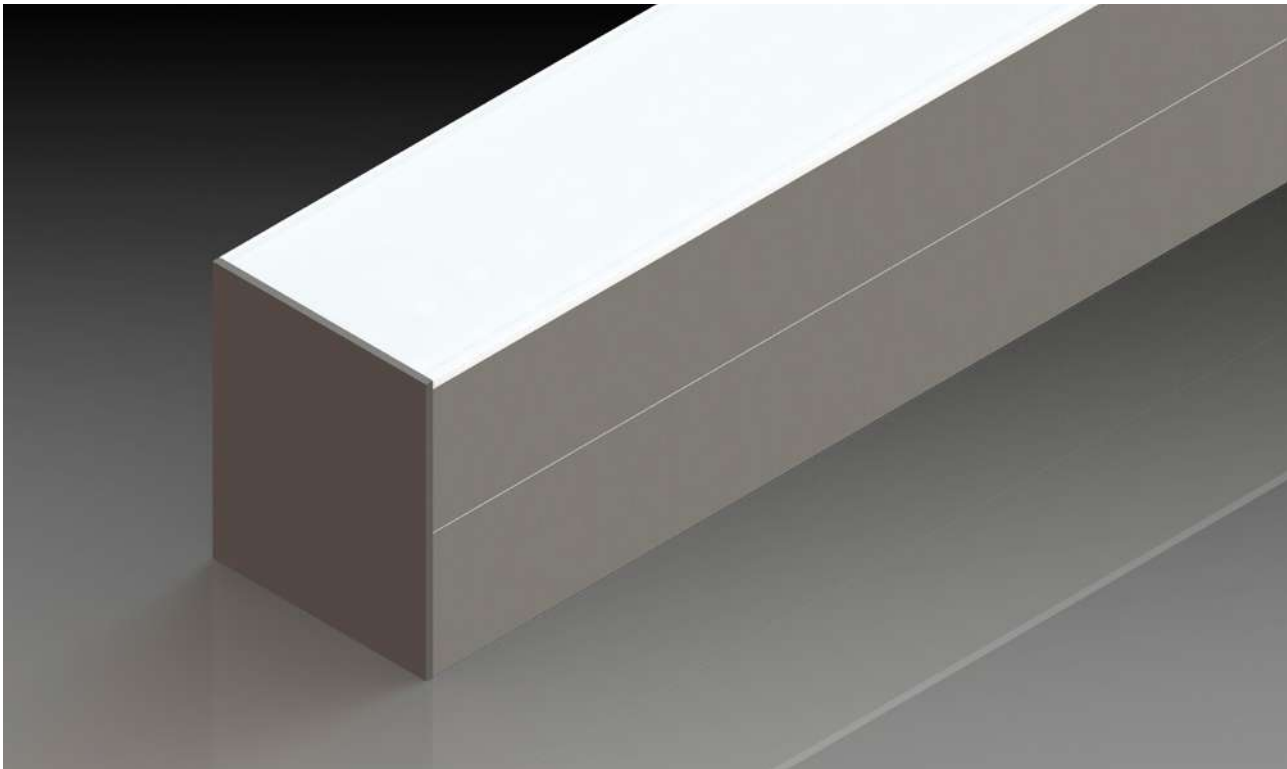
Optics	Voltage	Operating Temperature	Lifetime	Finish	Ingress Protection
Diffused	24V	-25°C to 55°C	>50,000 Hours	<div><div>• Anodized</div><div>• RAL</div></div>	IP20



Sama 4040i

Wattage (W/m)	Dimensions (mm)	Mounting	CCT	CRI*
<div><div>• 19.2</div><div>• 28.8</div><div>• 38.4</div><div>• 57.6</div></div>	40×40	<div><div>• Recessed</div><div>• Surface</div><div>• Pendant</div></div>	<div><div>• 2700K</div><div>• 3000K</div><div>• 3500K</div><div>• 4000K</div><div>• 5000K</div><div>• RGB</div><div>• RGBW</div><div>• TW(3000K-5500K)</div></div>	<div><div>>80, >90</div><div>*CRI is not applicable for RGB/W</div></div>

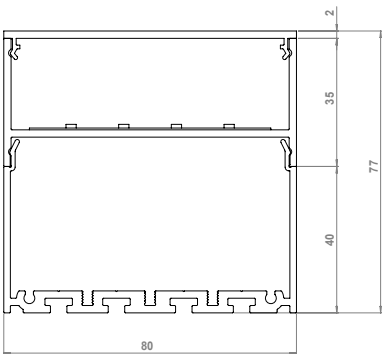
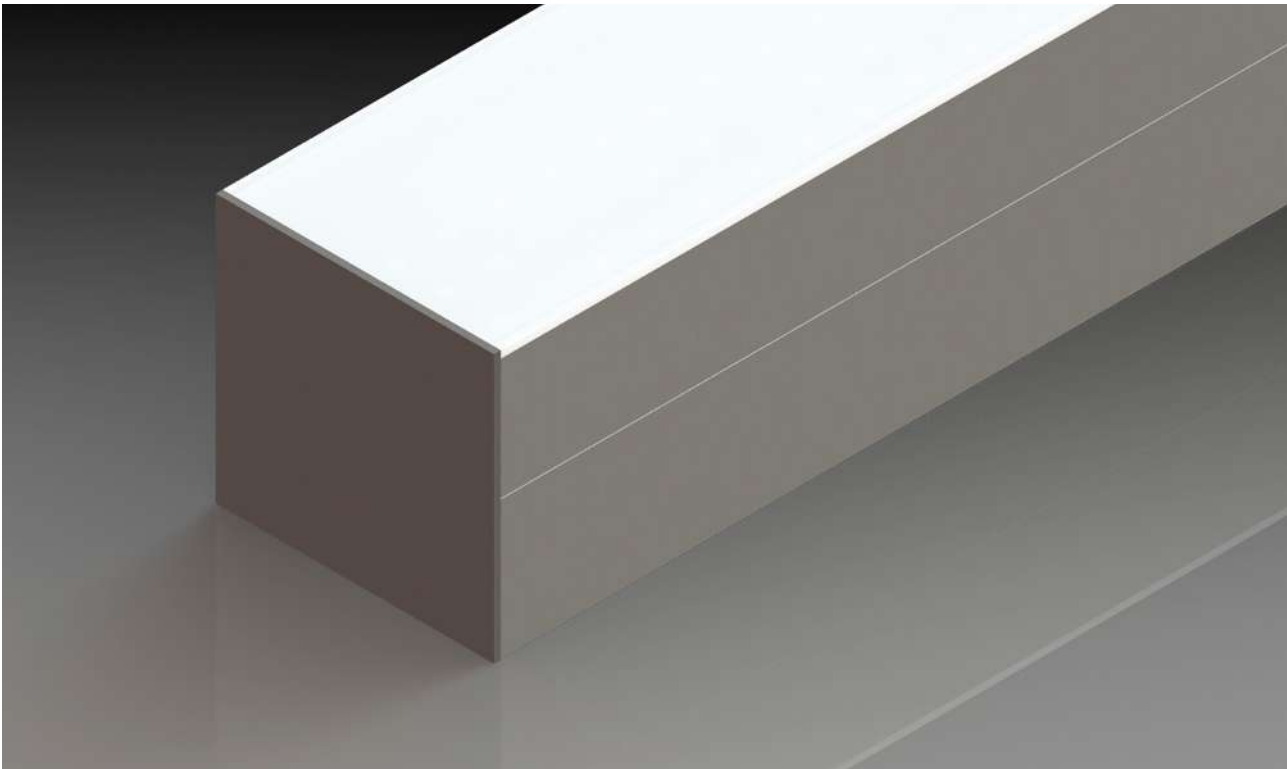
Optics	Voltage	Operating Temperature	Lifetime	Finish	Ingress Protection
Diffused	24V	-25°C to 55°C	>50,000 Hours	<div><div>• Anodized</div><div>• RAL</div></div>	IP20



Sama 6070i

Wattage (W/m)	Dimensions (mm)	Mounting	CCT	CRI*
<div><ul style="list-style-type: none">• 28.8• 43.2• 57.6• 86.4</div>	60×60	<div><ul style="list-style-type: none">• Recessed• Surface• Pendant</div>	<div><ul style="list-style-type: none">• 2700K• 3000K• 3500K• 4000K• 5000K• RGB• RGBW• TW(3000K-5500K)</div>	<div>>80, >90</div> <div><small>*CRI is not applicable for RGB/W</small></div>

Optics	Voltage	Operating Temperature	Lifetime	Finish	Ingress Protection
Diffused	24V	-25°C to 55°C	>50,000 Hours	<div><ul style="list-style-type: none">• Anodized• RAL</div>	IP20



Sama 8075i

Wattage (W/m)	Dimensions (mm)	Mounting	CCT	CRI*
<div><ul style="list-style-type: none">• 28.8• 43.2• 57.6• 86.4</div>	80×75	<div><ul style="list-style-type: none">• Recessed• Surface• Pendant</div>	<div><ul style="list-style-type: none">• 2700K• 3000K• 3500K• 4000K• 5000K• RGB• RGBW• TW(3000K-5500K)</div>	<div>>80, >90</div> <div><small>*CRI is not applicable for RGB/W</small></div>

Optics	Voltage	Operating Temperature	Lifetime	Finish	Ingress Protection
Diffused	24V	-25°C to 55°C	>50,000 Hours	<div><ul style="list-style-type: none">• Anodized• RAL</div>	IP20

Naham

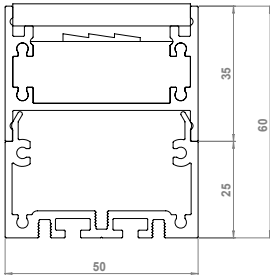
High-power wallwashers for far-reaching lighting in any outdoor space.

Naham produces a homogeneous long-range lighting effect, creating a harmonised outdoor space.

Common Applications

- Outdoor
- Walkways
- Façades
- Wallwashing

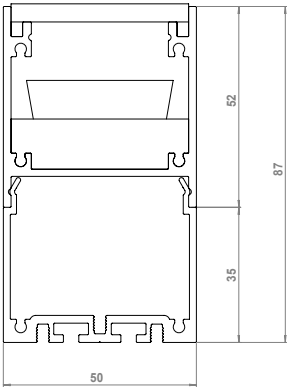
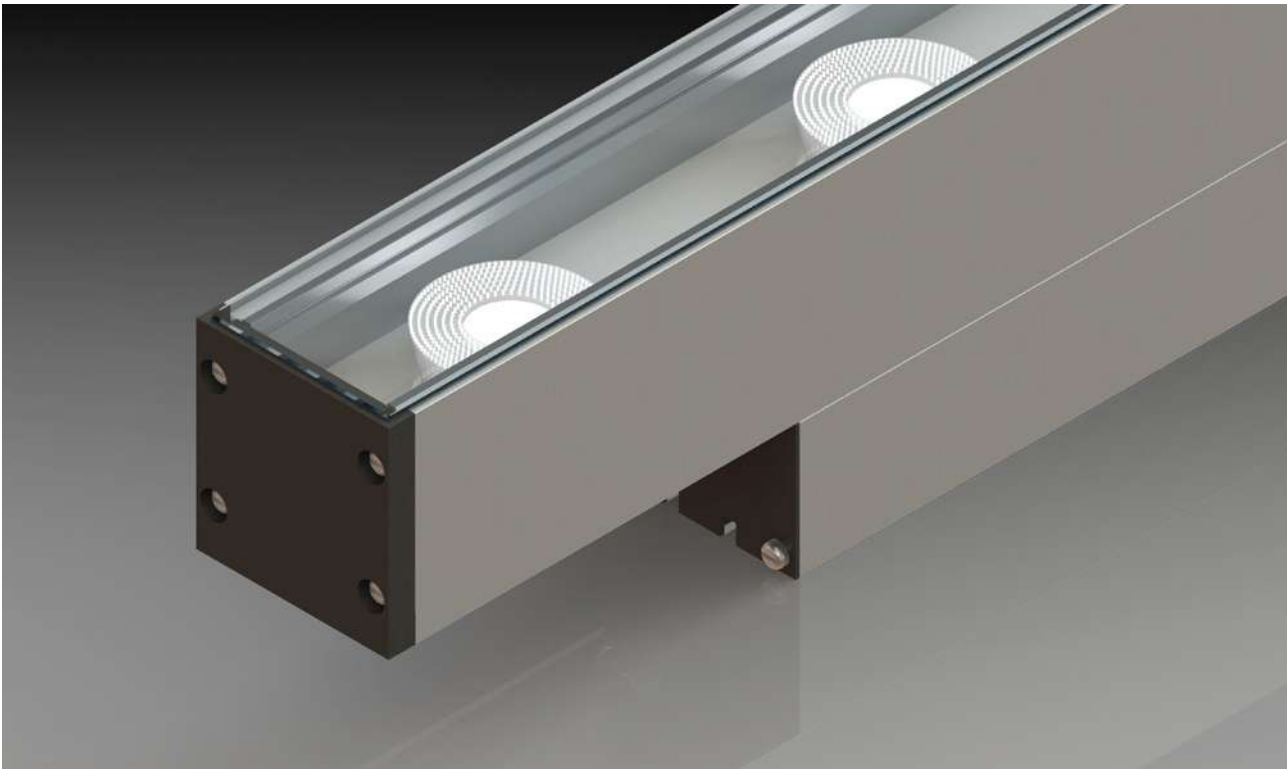
These durable, high-power lights have in-built drivers, allowing for convenient installation, particularly when space may not allow for multiple junction boxes.



Naham 5060

Wattage (W/m)	Dimensions (mm)	Mounting	CCT	CRI*
48W	50×70	<div><div>• Recessed</div><div>• Surface</div></div>	<div><div>• 2700K</div><div>• 3000K</div><div>• 3500K</div><div>• 4000K</div><div>• 5000K</div></div>	<div><div>>80</div><div>>90</div></div>

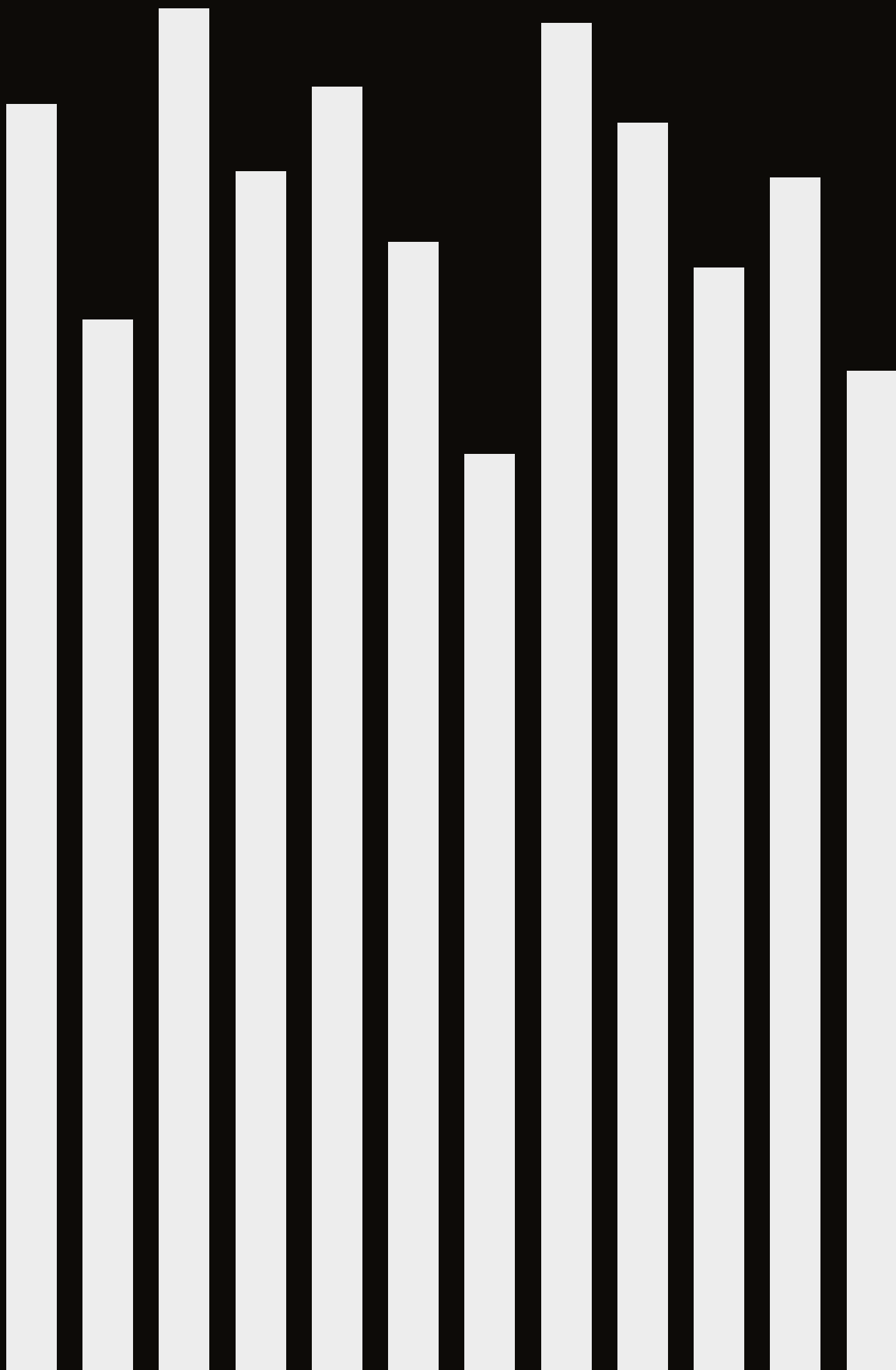
Optics	Voltage	Operating Temperature	Lifetime	Finish	Ingress Protection
<div><div>• 10°x65°</div><div>• 45° Asymmetrical</div><div>• 15°x65°</div></div>	220 VAC	-25°C to 55°C	>50,000 Hours	<div><div>• Anodized</div><div>• RAL</div></div>	IP67



Naham 5087

Wattage (W/m)	Dimensions (mm)	Mounting	CCT	CRI*
36W	50×87	<div><div>• Recessed</div><div>• Surface</div></div>	<div><div>• RGB</div><div>• RGBW</div><div>• TW(2700K, 5000K)</div></div>	N/A

Optics	Voltage	Operating Temperature	Lifetime	Finish	Ingress Protection
<div><div>• 10°x65°</div><div>• 45° Asymmetrical</div><div>• 15°x65°</div></div>	220 VAC	-25°C to 55°C	>50,000 Hours	<div><div>• Anodized</div><div>• RAL</div></div>	IP67



Wave

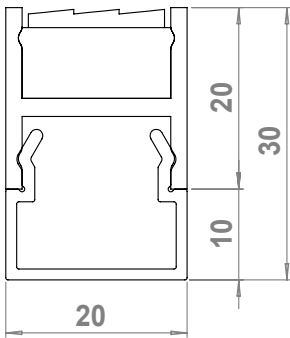
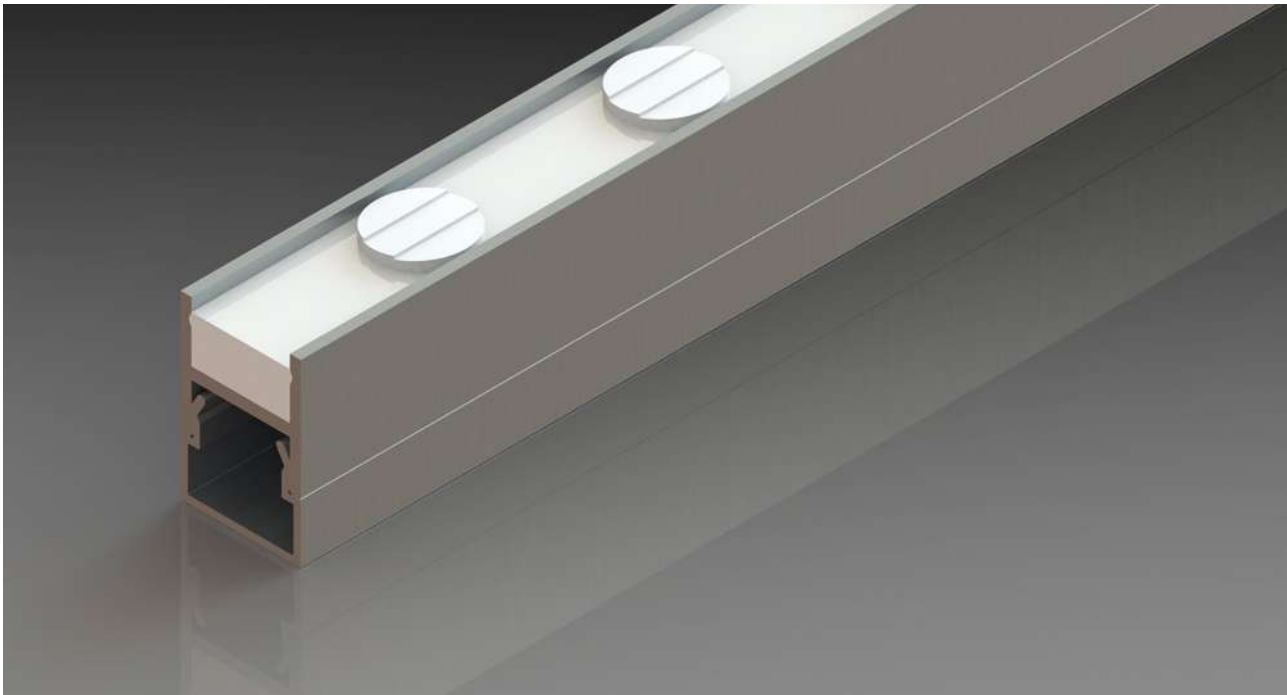
Compact, linear wallwashers with high-grade weatherproofing.

This mid-power wallwasher has a focused beam for an even, subtle effect. Similar to the Naham series, this profile is slim and lightweight.

Common Applications

- Villas (Small Buildings)
- Subtle wall washing effect

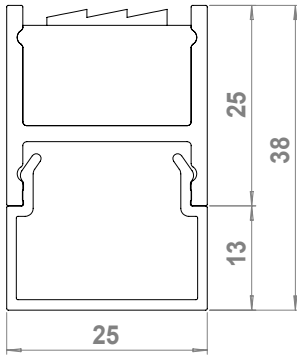
With its resin encapsulation, it achieves superior protection against the elements.



Wave 2030

Wattage (W/m)	Dimensions (mm)	Mounting	CCT	CRI*
12	20×30	<div><div>• Recessed</div><div>• Surface</div></div>	<div><div>• 2700K</div><div>• 3000K</div><div>• 3500K</div><div>• 4000K</div><div>• 5000K</div></div>	<div><div>>80</div><div>>90</div></div>

Optics	Voltage	Operating Temperature	Lifetime	Finish	Ingress Protection
<div><div>• 20°x40°</div><div>• 45°</div><div>• 18°</div><div>• 20°</div></div>	24V	-25°C to 55°C	>50,000 Hours	<div><div>• Anodized</div><div>• RAL</div></div>	IP67



Wave 2538

Wattage (W/m)	Dimensions (mm)	Mounting	CCT	CRI*
<div><div>• 15</div><div>• 25</div></div>	25×38	<div><div>• Recessed</div><div>• Surface</div></div>	<div><div>• 2700K</div><div>• 3000K</div><div>• 3500K</div><div>• 4000K</div><div>• 5000K</div><div>• RGB</div><div>• RGBW</div><div>• TW(3000K-5500K)</div></div>	<div><div>>80</div><div>>90</div></div>

Optics	Voltage	Operating Temperature	Lifetime	Finish	Ingress Protection
<div><div>• 10°x65°</div><div>• 15°x60°</div><div>• 45° Asymmetrical</div><div>• 15°</div></div>	24V	-25°C to 55°C	>50,000 Hours	<div><div>• Anodized</div><div>• RAL</div></div>	IP67

Dana

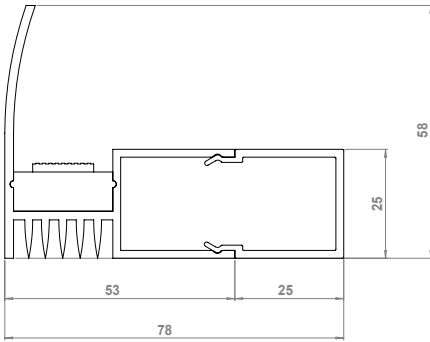
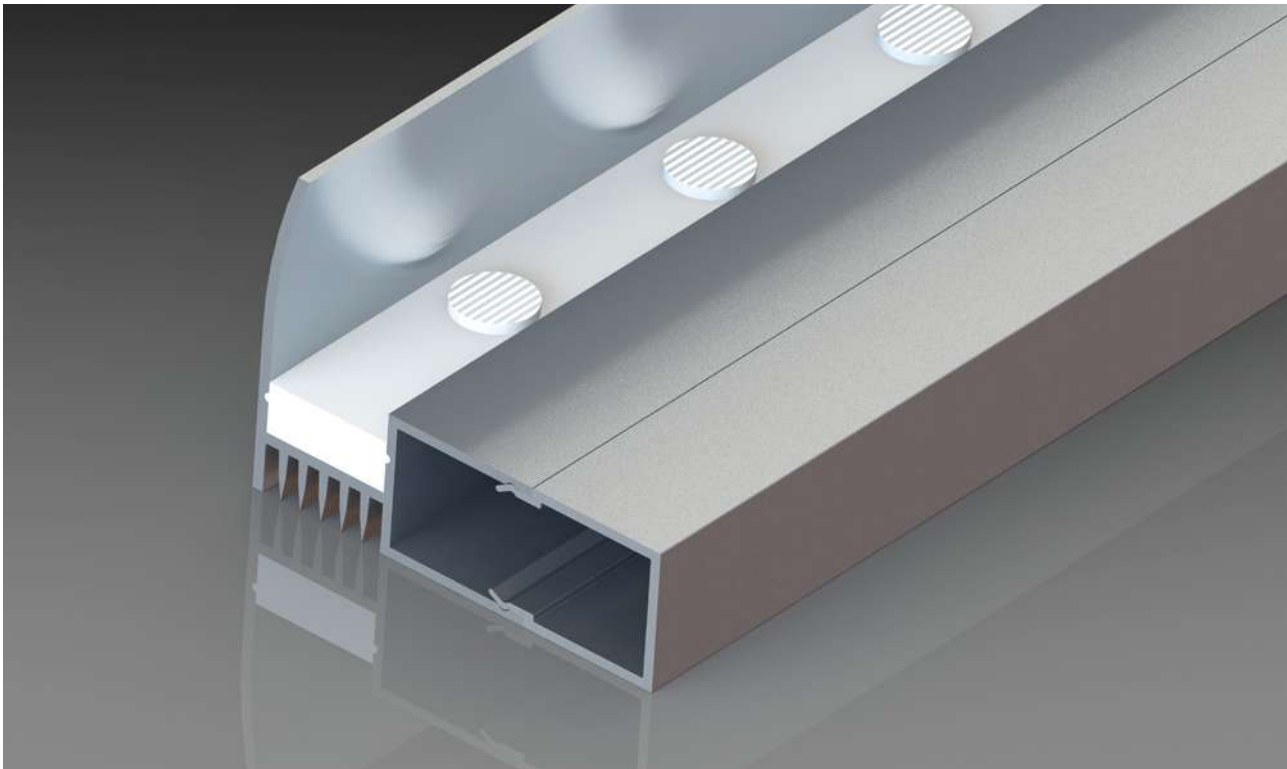
**Subtle illumination and highlighting
for a multi-dimensional effect.**

This series produces an even, shadow-free illumination. The anti-glare reflector hides the light source, making it ideal for discrete displays.

Common Applications

- Outdoor
- Façades
- Hidden wallwashing
- Hot climates

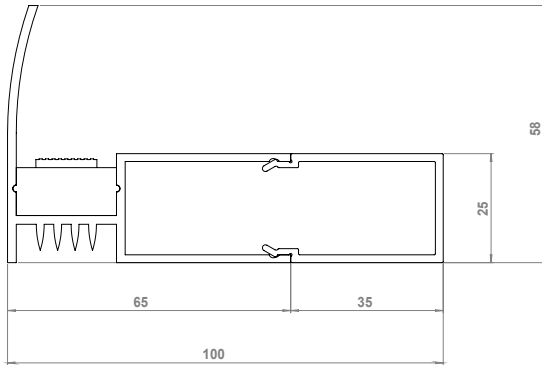
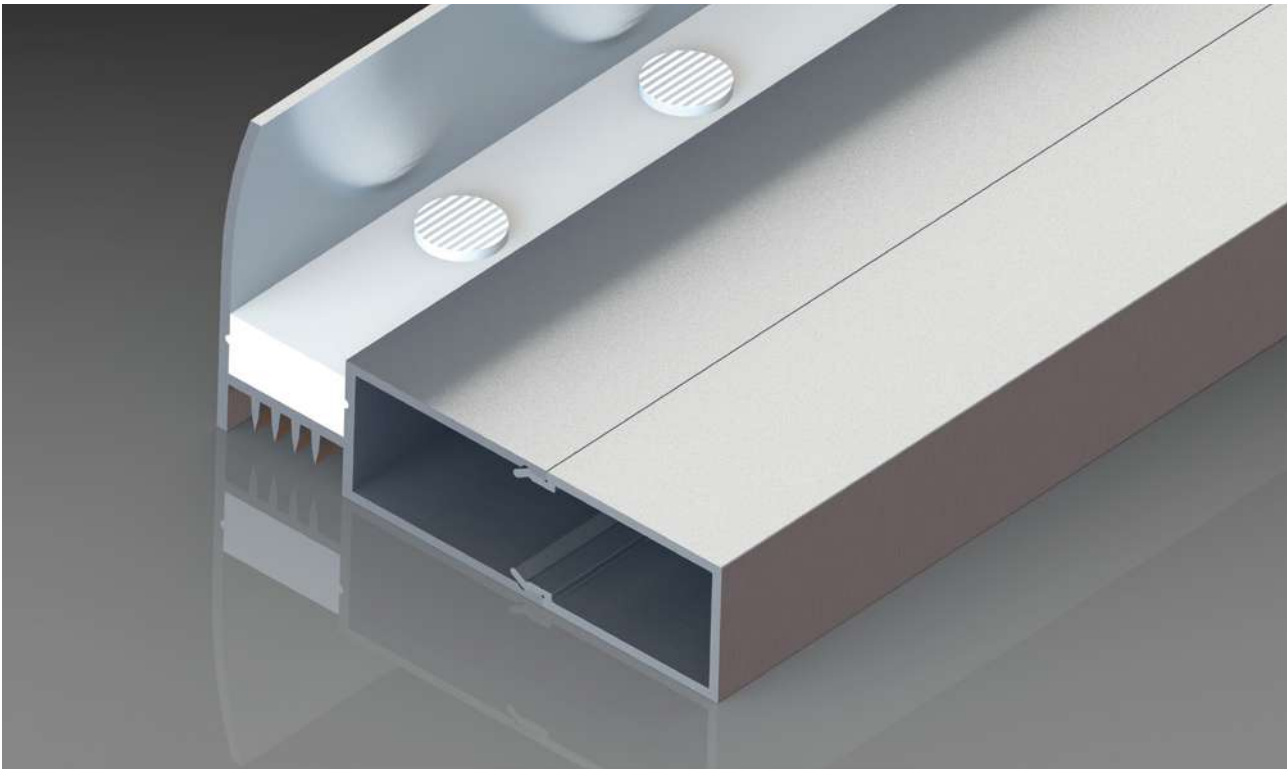
The side-emitting surface-mounted wallwasher is a high-performance, mid-power light fixture. It also features a built-in heat sink to protect against overheating in hotter climates.



Dana 5876

Wattage (W/m)	Dimensions (mm)	Mounting	CCT	CRI*
• 10 • 15 • 19.2	58×76	Surface	• 2700K • 3000K • 3500K • 4000K • 5000K • RGB • RGBW • TW(3000K-5500K)	>80 >90

Voltage	Operating Temperature	Lifetime	Finish	Ingress Protection
24V	-25°C to 55°C	>50,000 Hours	• Anodized • RAL	IP67



Dana 58100

Wattage (W/m)	Dimensions (mm)	Mounting	CCT	CRI*
• 10 • 15 • 19.2	58×100	Surface	• 2700K • 3000K • 3500K • 4000K • 5000K • RGB • RGBW • TW(3000K-5500K)	>80 >90

Voltage	Operating Temperature	Lifetime	Finish	Ingress Protection
24V	-25°C to 55°C	>50,000 Hours	• Anodized	IP67

Bader

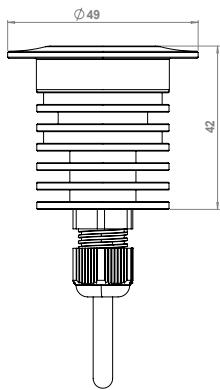
In-ground recessed uplights.

Bader's in-ground recessed uplights illuminate vertical elements, such as columns. This series also performs well across landscaping and walkways.

Common Applications

- Outdoor
- Parks
- Pillars and columns
- Wall scalloping
- Walkways
- Paths

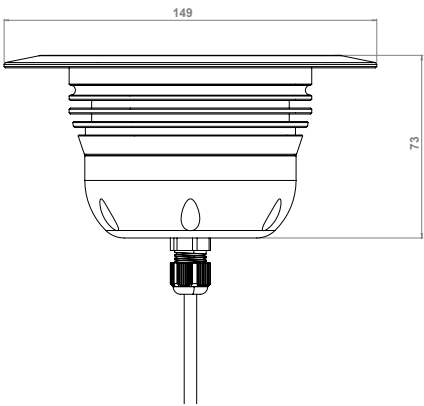
These are machined entirely out of aluminium for a better finish and improved heat dissipation, increasing the luminaire's lifetime.



Bader 1

Wattage (W/m)	Mounting	CCT	CRI*
1W	Recessed	<ul style="list-style-type: none">• 2700K• 3000K• 4000K• 5000K	<ul style="list-style-type: none">>80>90

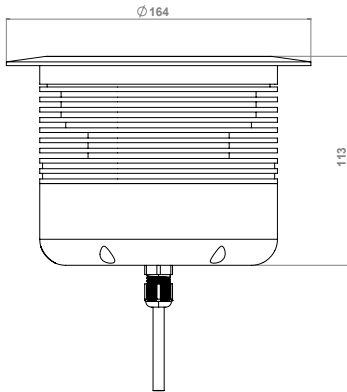
Optics	Input Power	Operating Temperature	Lifetime	Finish	Ingress Protection
Diffused	CC350mA	-25°C to 55°C	>50,000 Hours	<ul style="list-style-type: none">• Anodized• RAL	IP67



Bader 7

Wattage (W/m)	Dimensions	Mounting	CCT	CRI*
7W	150Φ	<ul style="list-style-type: none">• Recessed• Wall mounted	<ul style="list-style-type: none">• 2700K• 3000K• 4000K• 5000K	<ul style="list-style-type: none">>80>90

Optics	Input Power	Operating Temperature	Lifetime	Finish	Ingress Protection
<ul style="list-style-type: none">• Wide Beam• Medium• Narrow Beams	220 VAC	-25°C to 55°C	>50,000 Hours	<ul style="list-style-type: none">• Anodized• RAL	IP67



Bader 18

Wattage (W/m)	Dimensions	Mounting	CCT	CRI*
18W	163Φ	<ul style="list-style-type: none">• Recessed• Wall mounted	<ul style="list-style-type: none">• 2700K• 3000K• 4000K• 5000K	<ul style="list-style-type: none">>80>90

Optics	Input Power	Operating Temperature	Lifetime	Finish	Ingress Protection
<ul style="list-style-type: none">• Wide Beam• Medium• Narrow Beams	220 VAC	-25°C to 55°C	>50,000 Hours	<ul style="list-style-type: none">• Anodized• RAL	IP67

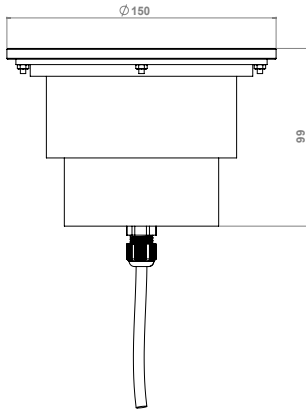
Hilal

In-ground recessed directional uplights.

The adjustable-beam direction of these in-ground recessed uplights are ideal for displaying outdoor spaces, particularly when they are used to project light from an angle.

Common Applications

- Outdoor
- Parks
- Pillars
- Wall scalloping
- Projectors



Hilal 9

Wattage (W/m)	Dimensions (mm)	Mounting	CCT	CRI*
9W	180Φ	<ul style="list-style-type: none">• Recessed• Wall mounted	<ul style="list-style-type: none">• 2700K• 3000K• 4000K• 5000K	<ul style="list-style-type: none">>80>90

Optics	Input Power	Operating Temperature	Lifetime	Finish	Ingress Protection
<ul style="list-style-type: none">• Wide Beam• Medium• Narrow Beams	220 VAC	-25°C to 55°C	>50,000 Hours	<ul style="list-style-type: none">• Anodized• RAL	IP67



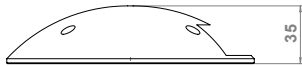
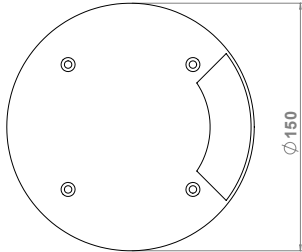
Dune

Side-emitting on-ground luminaires.

Dune's on-ground walkway lights are developed for gardens and walkways. These luminaires are machined out of a single block of aluminium for a solid, high-grade design.

Common Applications

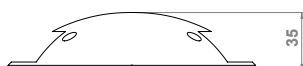
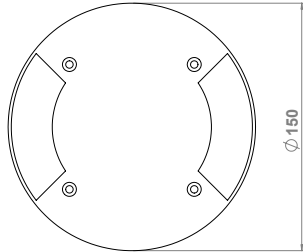
- Outdoor
- Gardens
- Parks
- Walkways



Dune 1

Wattage (W/m)	Dimensions (mm)	Mounting	CCT	CRI*
1W	150Φ	Surface	• 2700K • 3000K	>80 >90

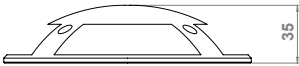
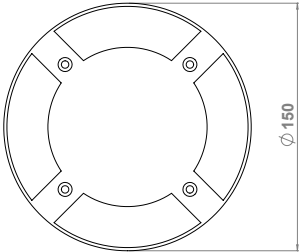
Optics	Input Power	Operating Temperature	Lifetime	Finish	Ingress Protection
90° Beam(s)	CC350mA	-25°C to 55°C	>50,000 Hours	• Anodized • RAL	IP67



Dune 2

Wattage (W/m)	Dimensions (mm)	Mounting	CCT	CRI*
2W	150Φ	Surface	• 2700K • 3000K	>80 >90

Optics	Input Power	Operating Temperature	Lifetime	Finish	Ingress Protection
90° Beam(s)	CC350mA	-25°C to 55°C	>50,000 Hours	• Anodized • RAL	IP67



Dune 4

Wattage (W/m)	Dimensions (mm)	Mounting	CCT	CRI*
4W	150Φ	Surface	<div><div>• 2700K</div><div>• 3000K</div></div>	<div><div>>80</div><div>>90</div></div>

Optics	Input Power	Operating Temperature	Lifetime	Finish	Ingress Protection
90° Beam(s)	CC350mA	-25°C to 55°C	>50,000 Hours	<div><div>• Anodized</div><div>• RAL</div></div>	IP67

Our Projects

Alurays delivers lighting solutions across a broad range of international projects. Our reputation is built on our expertise, enduring quality, and personalised service.

Saafa Corniche Street Lighting

Location

Corniche, Doha, Qatar

Client

Public Works Authority (Ashghal)

Scope of Work

Supply of LED street light modules and linear profiles for Saafa (frond) streetlight poles.

The Saafa lighting poles, with their distinguished design featuring Qatari identity, line a 10-kilometer waterfront road in Doha and overlook major landmarks such as the Qatar National Museum, Museum of Islamic Arts, Old Doha Port, Al Bidda Park, and the Doha skyline. There are over 1,650 poles in total, each fitted with a streetlight and a specially made extruded, double-sided aluminum profile bent to match the curvature of the pole and wash the "Saafa leaves" while hiding the light source.



Lusail Boulevard

Location
Lusail, Qatar

Client
Lusail City

Scope of Work
Supply of more than 38,000 metres of linear façade lights.

Lusail Commercial Boulevard, a 1.3-kilometer commercial development in Lusail, Qatar, has been designed as the largest integrated commercial street in the Arabian Gulf. The project is notable for its customization, with each light fitting produced to a specific length, finish, and orientation requirements. Alurays manufactured more than 38,000 meters of customized 'DANA' wall washer façade lights for the project, which offer a modern look and an anti-glare cover with an integrated heatsink.



Kempinski Residences & Suites

Location
West Bay, Doha, Qatar

Client
Al Fardan Properties

Scope of Work
Design, supply, and installation of façade and canopy lighting at the tallest tower in Doha's skyline.

Kempinski Residences & Suites, Doha is a luxurious hotel located in the central business district of West Bay, near major embassies, companies, government offices, and the City Centre Shopping Mall. The 256-meter-tall tower features pixel-controlled facade and canopy light fittings, designed, manufactured, and installed by Alurays on all four sides, using their proprietary Dana Series profiles to eliminate glare from direct viewing of the light source.



Flight Deck Training Academy

Location
Hamad International Airport, Doha, Qatar

Client
Qatar Airways

Scope of Work
Design, supply, and installation of linear RGBW pixel-controlled profiles.

The FDTA Facility project, owned by Qatar Airways, and located at Hamad International Airport, houses a Simulator Training Facility featuring 28 full-height simulators. Alurays designed, manufactured, and supplied pixel-controlled RGBW facade light fittings for the project, including Sama Series profiles for direct view, Wave Series to highlight areas between fins, and Dana Series profiles for the outline of the building. The dynamic lights of the project make it a standout landmark at Hamad International Airport.



Wesaya Tower

Location
C Ring Road, Doha, Qatar

Client
General Authority of Minors Affairs

Scope of Work
Supply and installation of facade lighting.

Al Wesaya Tower is a 22-storey office building located in the Bin Mahmoud District of Doha, Qatar, and serves as the head office for Qatar's General Authority for Minor Affairs. Alurays was responsible for the design, manufacturing, supply, and installation of Dana RGB facade light fittings for the tower. The Dana wall washer is a modern lighting solution for architectural facades, and the version used for Al Wesaya Tower includes an anti-glare cover and an integrated heatsink.



Feeh Al'Afiah

Location
Katara Cultural Village, Doha, Qatar

Client
Aspire Zone Foundation

Scope of Work
Supply and installation of façade lighting.

Feeh Al'Aafiah is an authentic Qatari restaurant located in the popular tourist destination of Katara Cultural Village. To enhance the visual appeal of the establishment, Alurays designed, manufactured, supplied, and installed its Wave, Sama, and flexible LED strip series profiles for the façade, Arch entrance, and Mashrabiya exterior designs. These light fittings create a welcoming and inviting atmosphere that adds to the ambiance of this fine-dining Qatari restaurant.



Workinton M7

Location
Msheireb, Doha, Qatar

Client
Al Fardan Properties

Scope of Work
Supply and installation of linear indoor profiles.

Workinton M7 is a unique workspace designed to revolutionize the work experience and startup ecosystem in Qatar. Located in the Msheireb Downtown, Doha, it features offices, co-working spaces, a multimedia studio, cafés, event spaces, meeting rooms, an indoor amphitheater, silent work pods, and more. Alurays manufactured and supplied complete indoor lighting solutions for the facility. The products supplied were suspended linear 'Sama' Series profiles, circular chandelier profiles, suspended pendant lights, and LED strip profiles.





Jameel Arts Centre, Dubai, UAE



5/6 Park, Doha, Qatar



Etihad Arena, Abu Dhabi, UAE



W Hotel, Dubai, UAE



Balenciaga, Milan, Italy



Danish Pavilion – Venice Biennale, Venice, Italy



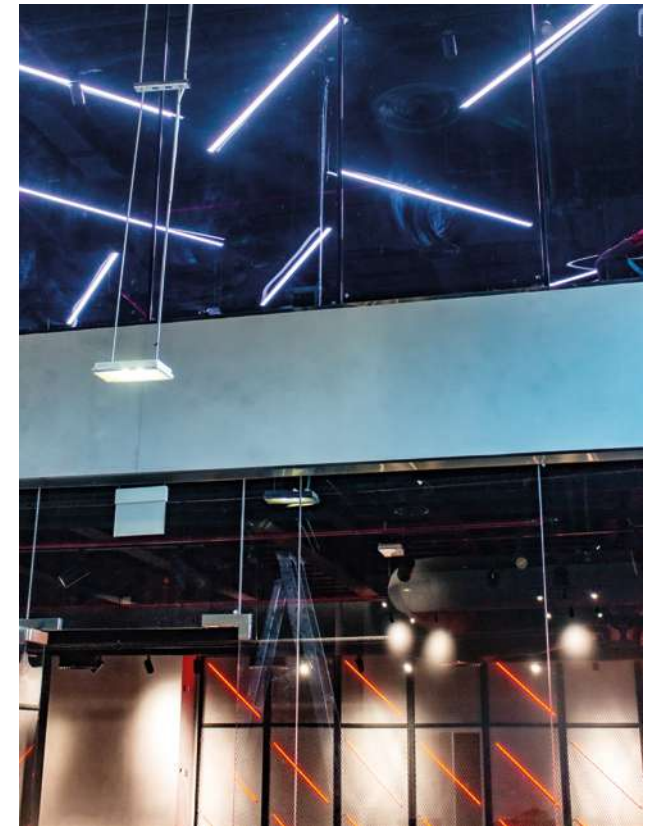
The Gate Mall, Doha, Qatar



Qgym, Al Rayyan, Qatar



Al Ahli Hospital, Al Rayyan, Qatar



Soul HIIT Gym, Doha, Qatar



Private Villa, Cypress



Abu Dhabi National Oil Company (ADNOC) Petrol Station, UAE

Offices

Germany

alurays lighting technology GmbH
Robert-Koch-Str. 1
D-82152 Planegg/Germany
Tel. +49-89-82087068
Fax. +49-89-82081010
info@alurays.de
www.alurays.de

Qatar

New Industrial Area, Street 1,
Factory 5,
Doha, Qatar
info@alurays.me
www.alurays.me

India

296/1, Sonal Estate,
Gota, Ahmedabad, Gujarat,
382481
India
+91 9727739209
saumil@alurays.co.in
www.alurays.co.in
