



—
your partner
in sensor
technology.

Product Catalog



+ Made in Austria



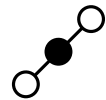
E+E Elektronik develops and produces sensors for humidity, dew point, moisture in oil, CO₂, air velocity, flow, temperature and pressure. Hand-held measuring devices, humidity calibration systems and calibration services complete the Austrian sensor specialist's product portfolio.

Headquarters

E+E Elektronik Ges.m.b.H.
Langwiesen 7
4209 Engerwitzdorf | Austria
T +43 7235 605-0
F +43 7235 605-8
info@epluse.com
www.epluse.com

www.epluse.com

+ Elements & Modules



Carbon Dioxide

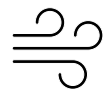
Page | 7



Humidity

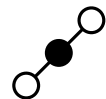
Page | 8

+ Sensors



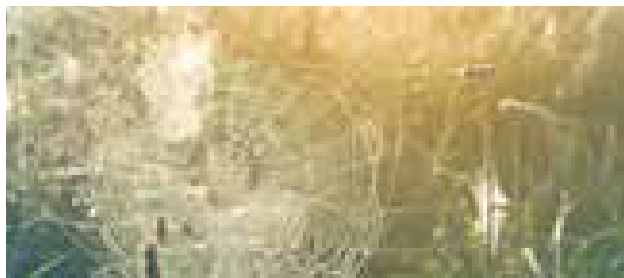
Air Velocity

Page | 12



Carbon Dioxide

Page | 14



Dew Point

Page | 16



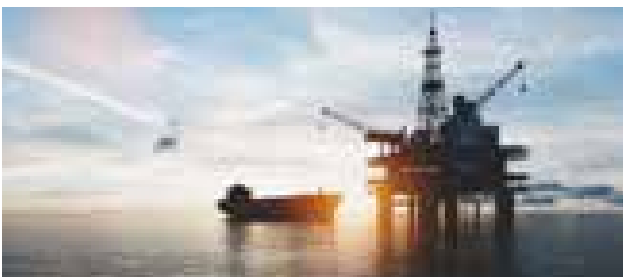
Flow

Page | 17



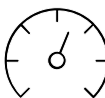
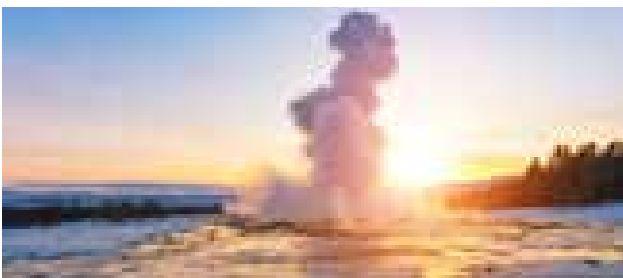
Humidity

Page | 19



Moisture in Oil

Page | 27



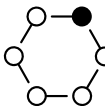
Pressure

Page | 28



Temperature

Page | 29



Instruments &
Systems

Page | 33

+ Elements & Modules



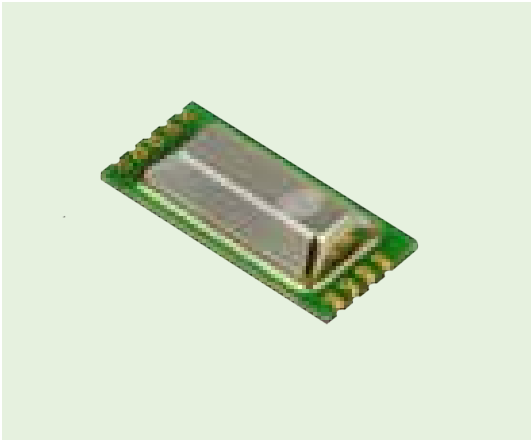
Our sensor elements and modules are developed in-house and manufactured in own state of the art clean rooms.

Custom-engineered electronics and unequalled calibration know how allow for the highest flexibility in meeting customer specific requirements. This makes E+E Elektronik the ideal partner for OEM applications.

+ Carbon Dioxide



EE894 CO ₂ Module Measures Four Climate Parameters	
Measuring range – CO ₂	0...2000 ppm / 0...5000 ppm / 0...10000 ppm
Measuring range – Humidity	0...95 % RH (non condensing)
Measuring range – Pressure	700...1100 mbar (10.15...15.95 psi)
Measuring range – Temperature	-40...60 °C (-40...140 °F)
Digital interface	I ² C / E2
Supply	4.75-7.5 V DC



EE895 Miniature Module for CO ₂ , Temperature and Barometric Pressure	
Measuring range – CO ₂	0...2000 ppm / 0...5000 ppm / 0...10000 ppm
Measuring range – Pressure	700...1100 mbar (10.15...15.95 psi)
Working range – Temperature	-40...60 °C (-40...140 °F)
Digital interface	I ² C / UART
Supply	3.3-5 V DC

+Humidity



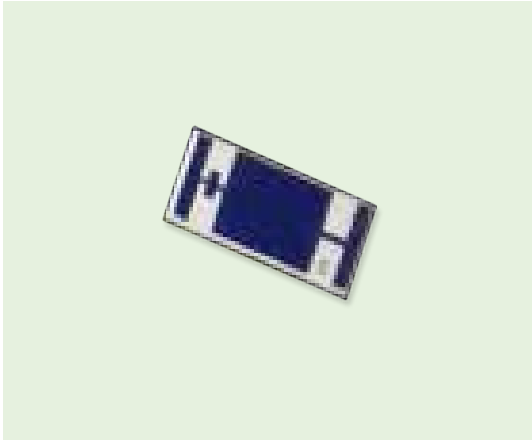
EE03
Digital Humidity and Temperature Module

Measuring range	0...100 % RH / -40...85 °C (-40...185 °F)
Accuracy	± 3 % RH / ± 0.3 °C (± 0.54 °F)
Output	digital E2 (2-wire)
Supply	2.5-5.5 V DC



EEH210
Digital Humidity and Temperature Element

Measuring range	0...100 % RH / -40...125 °C (-40...257 °F)
Accuracy	± 2.0 % RH / ± 0.3 °C (0.54 °F)
Digital interfaces	I ² C, PWM, PDM, SPI
Supply	3 V



HC103M2
Very Fast Humidity Element for Radiosondes

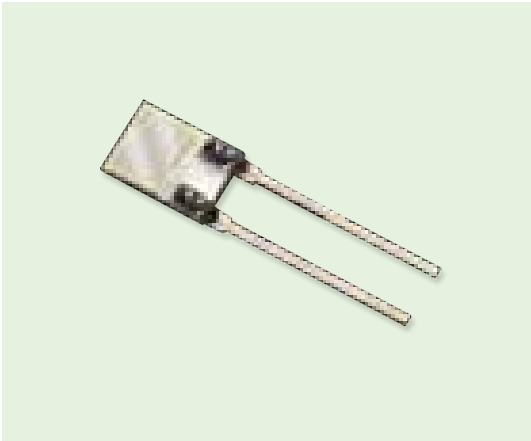
Nominal capacitance C ₀ (at 30 °C / 86 °F)	160 ± 40 pF
Sensitivity	0.55 pF / % RH
Measuring range - Humidity	0...100 % RH
Measuring range - Temperature	-80...60 °C (-112...140 °F)
Response time t ₆₃	< 3 s at 23 °C / < 15 s at -20 °C

+Humidity



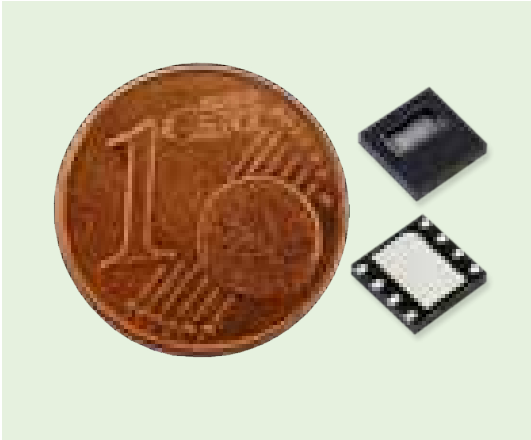
HC109
Miniature SMD Capacitive Humidity Element

Nominal capacitance C ₀ (at 30 °C)	80 ± 12 pF
Nominal capacitance C ₇₆ (at 30 °C)	100.8 ± 15.1 pF
Sensitivity	0.27 pF / % RH
Working range - Humidity	0...100 % RH
Working range - Temperature	-40...120 °C (-40...248 °F)



HC201
Capacitive Humidity Element with Leads

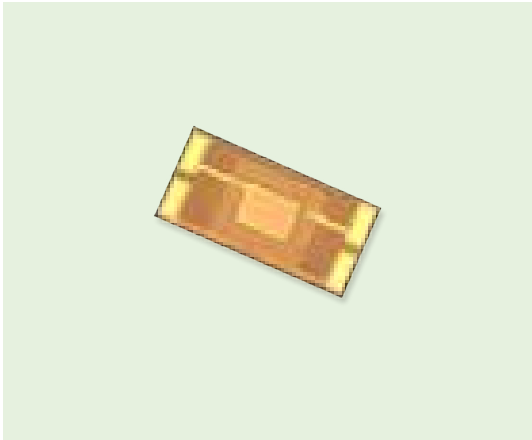
Nominal capacitance C ₇₆ (at 20 °C)	200 ± 30 pF
Sensitivity	0.6 pF / % RH
Working range - Humidity	10...95 % RH
Working range - Temperature	-40...110 °C (-40...230 °F)



HCT01
Pre-adjusted Humidity and Temperature Element

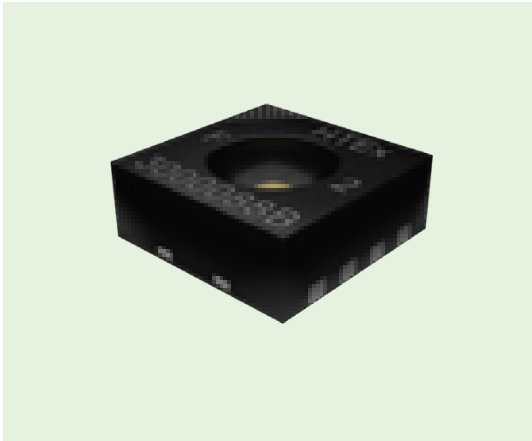
Nominal capacitance C ₀	70.1 pF
Accuracy (at 30 °C)	± 2 % RH (30...70 % RH) ± 3 % RH (0...90 % RH)
Sensitivity	0.25 pF / % RH
Working range - Humidity	0...100 % RH
Working range - Temperature	-40...140 °C

+ Humidity



HMC03M
Heated Humidity Sensor for Radiosondes

Nominal capacitance C ₀ (at 30 °C / 86 °F)	120 ± 40 pF
Sensitivity (for C ₀ = 120 pF, in average)	0.41 pF / % RH
Working range – Humidity	0...100 % RH
Working range – Temperature	-80...60 °C (-112...140 °F)



HTE501
Digital Element for Highly Accurate Humidity
and Temperature Measurement

Accuracy	± 1.8 % RH (incl. hysteresis) / ± 0.2 °C
E+E proprietary coating	
Supply Voltage	2.35-3.60 V
Constant current heater	
I ² C interface	with selectable addresses and direct 16 bit integer output

+ Sensors



Sensors by E+E Elektronik are renowned for their high quality, outstanding measuring accuracy and excellent long-term stability. They are used worldwide in a wide variety of fields.

The main areas of application are in industrial measurement technology, HVAC and building automation but also many other industries such as meteorology, the pharmaceuticals and food industries or in cleanrooms.

+ Air Velocity



EE576
Probe for Very Low Air Velocity

Measuring range	0...1 m/s (0...200 ft/min) 0...2 m/s (0...400 ft/min)
Working range – Temperature	-20...60 °C (-4...140 °F)
Output	0-5 V / 0-10 V



EE650
Air Velocity Sensor for HVAC Applications

Measuring range	0...10 m/s (0...2000 ft/min) 0...15 m/s (0...3000 ft/min) 0...20 m/s (0...4000 ft/min)
Working temperature	-25...50 °C (-13...122 °F)
Output analogue	0-10 V / 4-20 mA
Output digital	Modbus RTU / BACnet MS/TP



EE660
Low Air Velocity Sensor

Measuring range	0...1 m/s (0...200 ft/min) 0...1.5 m/s (0...300 ft/min) 0...2 m/s (0...400 ft/min)
Working temperature	-25...50 °C (-13...122 °F)
Output analogue	0-10 V / 4-20 mA
Output digital	Modbus RTU / BACnet MS/TP

+ Air Velocity



EE671
HVAC Air Velocity Probe

Measuring range	0...5 m/s (0...1000 ft/min) 0...10 m/s (0...2000 ft/min) 0...15 m/s (0...3000 ft/min) 0...20 m/s (0...4000 ft/min)
Working range – Temperature	-20...60 °C (-4...140 °F)
Output analogue	0-1 V / 0-5 V / 0-10 V
Output digital	Modbus RTU



EE680
Air Velocity and Temperature Sensor for Laminar Flow

Measuring range – Air Velocity	0...2 m/s (0...400 ft/min)
Measuring range – Temperature	-20...70 °C (-4...158 °F)
Output analogue	0-5 V / 0-10 V / 0-20 mA / 4-20 mA (3-wire)
Output digital	Modbus RTU
LED Ring	for visualization of status



EE75
High-Precision Air and Gas Velocity Sensor for Industrial Applications

Measuring range – Air Velocity	0...2 m/s (0...400 ft/min) 0...10 m/s (0...2000 ft/min) 0...40 m/s (0...8000 ft/min)
Measuring range – Temperature	-40...120 °C (-40...248 °F)
Pressure rating	up to 10 bar
Output	0-10 V / 4-20 mA (3-wire)

+Carbon Dioxide



CO₂ Guard 10
CO₂ Monitor with Traffic Light Indication

Measuring range	0...5000 ppm
CO ₂ thresholds	800, 1000, 1400, 2000, 3000 ppm
CO ₂ level / threshold indication	optic (LEDs) / acoustic (buzzer)
Battery life time	6 months (4 alkaline batteries 1.5 V-1200 mAh), 4 months (4 rechargeable batteries 1.2 V-1100 mAh)
Protection rating	IP30 (wall mount) / IP20 (tabletop)



EE800
Room Sensor for CO₂, Temperature and Relative Humidity

Measuring range – CO ₂	0...2000 ppm / 0...5000 ppm
Measuring range – Humidity	10...90 % RH
Measuring range – Temperature	-20...60 °C (-4...140 °F)
Output analogue	0-5 V / 0-10 V / 4-20 mA
Output digital	Modbus RTU / BACnet MS/TP



EE820
CO₂ Sensor for Demanding Applications

Measuring range	0...2000 ppm / 0...5000 ppm / 0...10000 ppm
Output analogue	0-5 V / 10 V / 4-20 mA
Output digital	Modbus RTU / BACnet MS/TP
Protection rating	IP54
Supply	24 V AC/DC

+Carbon Dioxide



EE850
CO₂, Humidity and Temperature Duct Sensor

Measuring range – CO ₂	0...2000 ppm / 0...5000 ppm / 0...10000 ppm
Measuring range – Humidity	0...95 % RH
Measuring range – Temperature	-20...60 °C (-4...140 °F)
Output analogue	0-5 V / 0-10 V / 4-20 mA
Output digital	Modbus RTU / BACnet MS/TP



EE872
Modular Probe for CO₂, Humidity, Temperature and Ambient Pressure

Measuring range – CO ₂	0...2000 / 0...5000 / 0...10000 ppm 0...3 / 5 %
Measuring range – Humidity	0...95 % RH
Measuring range – Temperature	-40...60 °C (-40...140 °F)
Measuring range – Pressure	700...1100 mbar (10.15...15.95 psi)
Output analogue	0-5 V / 0-10 V / 0-20 mA / 4-20 mA
Output digital	Modbus RTU / BACnet MS/TP



EE8915
CO₂ Sensor for Railway Applications

Measuring range	0...2000 ppm / 0...5000 ppm / 0...10000 ppm
Protection rating	IP65 / NEMA4
Output	0-5 V / 0-10 V / 0-20 mA / 4-20 mA
Compliance	Railway standards
T working range	-40...60 °C (-40...140 °F)

+Dew Point



EE354
Dew Point Sensor Down to -20 °C Td (-4 °F Td)

Measuring range	-20...50 °C Td (-4...122 °F Td)
Pressure rating	up to 80 bar (1160 psi)
Output analogue	4-20 mA
Output digital	Modbus RTU



EE355
Dew Point Sensor Down to -60 °C Td (-76 °F Td)

Measuring range	-60...60 °C Td (-76...140 °F Td)
Pressure rating	up to 80 bar (1160 psi)
Output analogue	4-20 mA
Output digital	Modbus RTU



EE371
Dew Point Sensor Down to -60 °C Td (-76 °F Td)

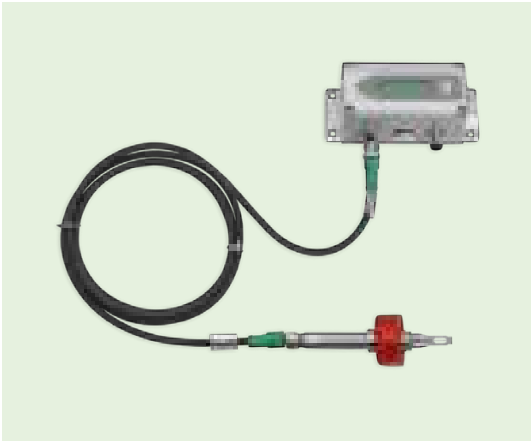
Measuring range	-60...60 °C (-76...140 °F Td)
Pressure rating	up to 100 bar (1450 psi)
Output	0-10 V / 4-20 mA

+Flow



EE741
Inline Flow Sensor for Compressed Air and Gases

Pipe diameter	DN15 up to DN50 (1/2"-2")
Measuring range	0.2-848.2 m³/h (0.12-315.71 SCFM)
Pressure range	up to 16 bar (232 psi)
Display	with device configuration function
Output	0-20 mA / 4-20 mA / Pulse / Switch / Modbus RTU / M-Bus / IO-Link



EE771
Flow Sensor for Compressed Air and Gases DN15 (1/2")-DN50 (2")

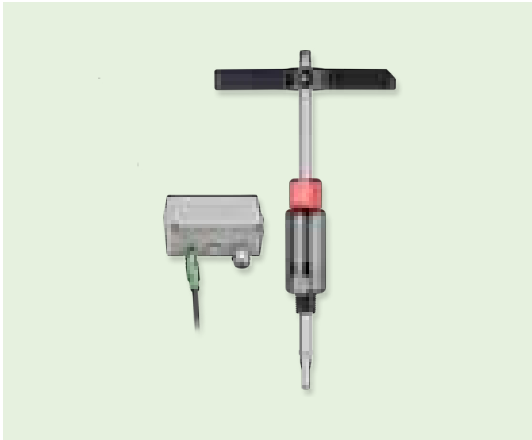
Pipe diameter	DN15 up to DN50 (1/2"-2")
Measuring range	0.5-200 m/s (100...39370 SFPM)
Pressure range	up to 16 bar (232 psi)
Output	0-10 V / 0-20 mA / 4-20 mA / Pulse / Switch / Modbus RTU / M-Bus



EE772
Multifunctional Flow Sensor for Compressed Air and Gases DN40 (1 1/2")-DN80 (3") / 40 bar (580psi)

Pipe diameter	DN40 up to DN80 (1 1/2"-3")
Measuring range	0.5-200 m/s (100...39370 SFPM)
Pressure range	up to 40 bar (580 psi)
Gauge mounting block	with hot tap valve for installation and removal without interruption of the flow
Output	0-10 V / 0-20 mA / 4-20 mA / Pulse / Switch / Modbus RTU / M-Bus

+Flow

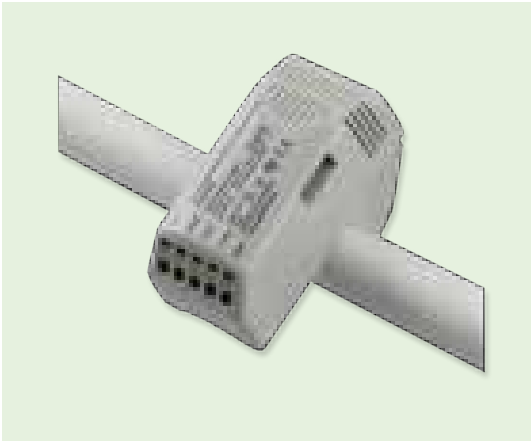


EE776 Insertion Flow Sensor for Compressed Air and Gases DN50-DN700 (2"-28")	
Pipe diameter	DN50 up to DN700 (2"-28")
Measuring range	0.5-200 m/s (100...39370 SFPM)
Pressure range	up to 16 bar (232 psi)
Protection	with patented non-return protection
Output	0-10 V / 0-20 mA / 4-20 mA / Pulse / Switch / Modbus RTU / M-Bus

+Humidity



EE040 OEM Humidity and Temperature Sensor	
Measuring range – Humidity	0...100 % RH
Measuring range – Temperature	-40...85 °C (-40...185 °F)
Sensing element protection	E+E proprietary coating
Output	0-2.5 V
Supply	5 V DC



EE046 Condensation Monitor	
Measuring range – Humidity	10...100 % RH
Switching point	90 ± 3 % RH
Sensing element protection	E+E proprietary coating
Output	Switch / max. 24 V AC/DC / 1 A
Mounting	wall, pipe or snap-on mount



EE060 / EE061 Humidity and Temperature Probe with Analogue Output	
Measuring range – Humidity	0...100 % RH
Measuring range – Temperature	-40...80 °C (-40...176 °F)
Sensing element protection	E+E proprietary coating
Output	0-1 V / 0-5 V / 0-10 V / 4-20 mA / T passive
Electrical connection	M 12 x 1 plug with 4 poles or cable

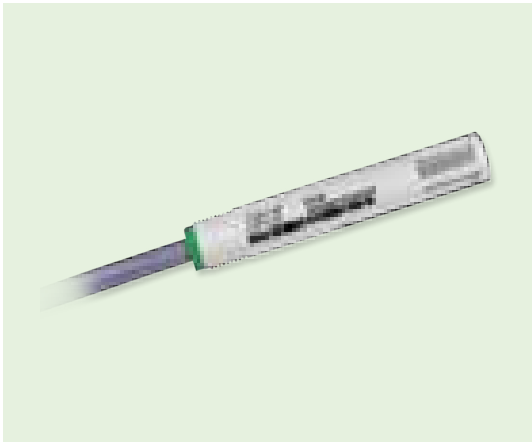
+Humidity



EE07 Interchangeable Humidity and Temperature Probe with Digital Output	
Measuring range – Humidity	0...100 % RH
Measuring range – Temperature	-40...80 °C (-40...176 °F)
Sensing element protection	E+E proprietary coating
Enclosure material	Polycarbonate or Stainless Steel
Output	digital E2 interface
Supply	standard: 3.8-5.5 V DC with energy saving option: 2.7-5.5 V DC



EE072 Humidity and Temperature Probe with Digital Interface	
Measuring range – Humidity	0...100 % RH
Measuring range – Temperature	-40...80 °C (-40...176 °F)
Sensing element protection	E+E proprietary coating
Enclosure material	Polycarbonate or Stainless Steel
Output	Modbus RTU / CANopen



EE08 High-Precision Miniature Humidity and Temperature Probe	
Measuring range – Humidity	0...100 % RH
Measuring range – Temperature	-40...80 °C (-40...176 °F)
Sensing element protection	E+E proprietary coating
Output analogue	0-1 V / 0-2.5 V / 0-5 V / 0-10 V / T passive
Output digital	E2 interface
Supply	4.5-15 V DC / 7-30 V DC

+Humidity



EE10 Humidity and Temperature Room Sensor	
Measuring range – Humidity	0...95 % RH
Measuring range – Temperature	-5...55 °C (23...131 °F)
Output analogue	0-10 V / 4-20 mA
Output digital	Modbus RTU / BACnet MS/TP



EE100Ex Intrinsically Safe Humidity and Temperature Sensor	
Measuring range – Humidity	0...100 % RH
Measuring range – Temperature	-40...60 °C (-40...140 °F)
Sensing element protection	E+E proprietary coating
Output	4-20 mA (2-wire)
Ex Certifications	ATEX (Europe), IECEx (international), Korea (KCs) and Japan (CSA)
Types	wall mount, remote probes fixed or pluggable



EE150 Humidity and Temperature Sensor for HVAC Applications	
Measuring range – Humidity	10...90 % RH
Measuring range – Temperature	-5...55 °C (23...131 °F)
Sensing element protection	E+E proprietary coating
Output	0-10 V / 4-20 mA (2-wire)
Types	wall mount / duct mount

+Humidity



EE160
HVAC Humidity and Temperature Sensor

Measuring range – Humidity	10...95 % RH
Measuring range – Temperature	-40...60 °C (-40...140 °F)
Sensing element protection	E+E proprietary coating
Output analogue	0-10 V / 4-20 mA / T passive
Output digital	Modbus RTU / BACnet MS/TP
Types	wall mount / duct mount



EE1900
Humidity Measurement Module
for OEM Applications

Measuring range – Humidity	0...100 % RH
Measuring range – Dew point	-20...80 °C Td (-4...176 °F Td)
Working range – Temperature	-70...180 °C (-94...356 °F)
Sensing element	E+E proprietary coating, Automatic sensor ReCovery (ARC)
Output	0-1 V / 0-5 V / 0-10 V / 0-20 mA / 4-20 mA (3-wire)



EE1950
Dew Point Measurement Module
for High Humidity Applications

Measuring range – Dew point	-20...100 °C Td (-4...212 °F Td)
Measuring range – Temperature	-70...180 °C (-94...356 °F)
Sensing element	heated for high humidity operation, E+E proprietary coating, Automatic sensor ReCovery (ARC)
Output	0-1 V / 0-5 V / 0-10 V / 0-20 mA / 4-20 mA (3-wire)

+Humidity



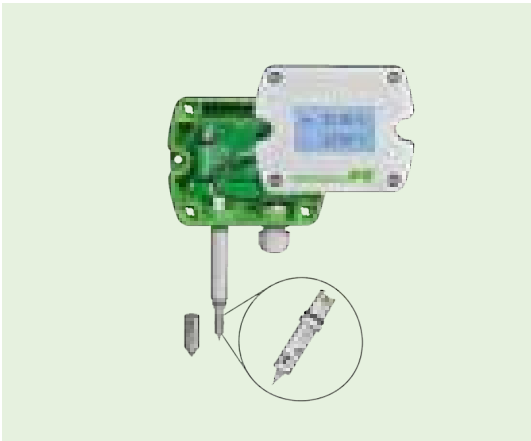
EE210
Humidity and Temperature Sensor
for Demanding Climate Control

Measuring range – Humidity	0...100 % RH
Measuring range – Temperature	-40...60 °C (-40...140 °F), remote probe -40...80 °C (-40...176 °F)
Sensing element protection	E+E proprietary coating
Output analogue	0-5 V / 0-10 V / 4-20 mA (2-wire) / 0-20 mA (3-wire)
Output digital	Modbus RTU / BACnet MS/TP



EE211
Humidity and Temperature Sensor
for Continuous High Humidity

Measuring range – Humidity	0...100 % RH
Measuring range – Temperature	-40...60 °C (-40...140 °F)
Sensing element	heated for high humidity operation, E+E proprietary coating
Output analogue	0-5 V / 0-10 V / 4-20 mA (2-wire) / 0-20 mA (3-wire)
Output digital	Modbus RTU



EE212
Modular Humidity and Temperature Sensor

Measuring range – Humidity	0...100 % RH
Measuring range – Temperature	-40...60 °C (-40...140 °F)
Sensing element	interchangeable module with rapidX technology, E+E proprietary coating
Output	0-5 V / 0-10 V / 4-20 mA (2-wire) / 0-20 mA (3-wire)
Types	wall mount / duct mount
Extra	with rapidX Technology

+Humidity



EE220 Humidity and Temperature Sensor with Interchangeable Probes	
Measuring range – Humidity	0...100 % RH
Measuring range – Temperature	-40...80 °C (-40...176 °F)
Sensing element protection	E+E proprietary coating
Output	0-1 V / 10 V / 4-20 mA (2-wire)
Enclosure material	Polycarbonate or Metal (AlSi ₉ Cu ₃)

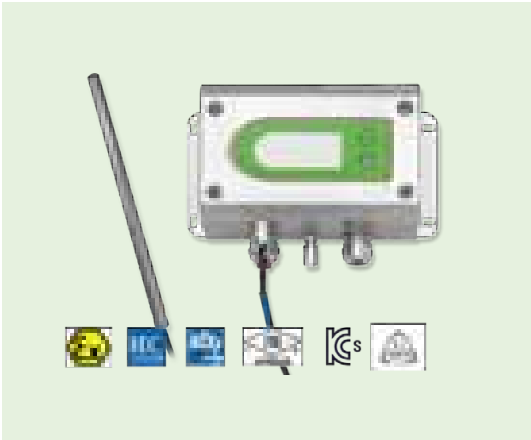


EE23 Humidity and Temperature Sensor for Industrial Applications	
Measuring range – Humidity	0...100 % RH
Measuring range – Temperature	-40...180 °C (-40...356 °F)
Sensing element protection	E+E proprietary coating
Output	0-1 V / 0-5 V / 0-10 V / 0-20 mA / 4-20 mA (3-wire)
Enclosure material	Polycarbonate or Metal (AlSi ₉ Cu ₃)



EE260 Heated Humidity and Temperature Probe for Meteorological Applications	
Measuring range – Humidity	0...100 % RH
Measuring range – Temperature	-60...60 °C (-76...140 °F)
Sensing element	dual heating system for high humidity operation, E+E proprietary coating
Output analogue	0-1 V / 0-2.5 V / 0-5 V / 0-10 V
Output digital	Modbus RTU
Type	unique probe design with integrated T sensor

+Humidity



EE300Ex-M1 Humidity and Temperature Sensor for Intrinsically Safe Applications	
Measuring range – Humidity	0...100 % RH
Measuring range – Temperature	-40...180 °C (-40...356 °F)
Sensing element protection	E+E proprietary coating
Pressure range	0.01...20 bar (0.15...290 psi)
Output	4-20 mA (2-wire)
Ex certifications	Europe (ATEX), International (IECEX), USA / Canada (FM), China (NEPSI), Korea (KCs) and Japan (TIIS)



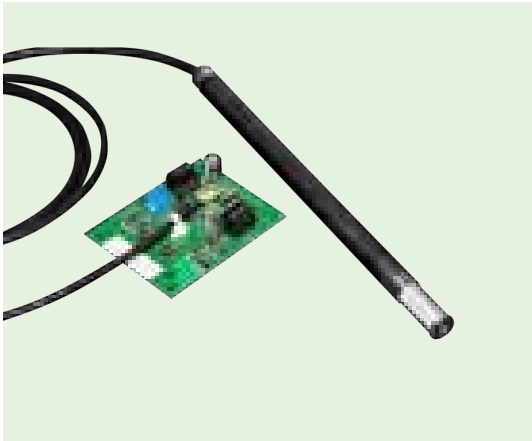
EE310 High-End Humidity and Temperature Sensor for Industrial Applications	
Measuring range – Humidity	0...100 % RH
Measuring range – Temperature	-40...180 °C (-40...356 °F)
Sensing element protection	E+E proprietary coating
Pressure range	0.01...20 bar (0.15...290 psi)
Output analogue	0-1 V / 0-5 V / 0-10 V / 0-20 mA / 4-20 mA (3-wire)
Output digital	Modbus RTU / Ethernet-PoE with Modbus TCP

+ Humidity



EE33
Humidity and Temperature Sensor for High Humidity, Chemical and High-end Meteorological Applications

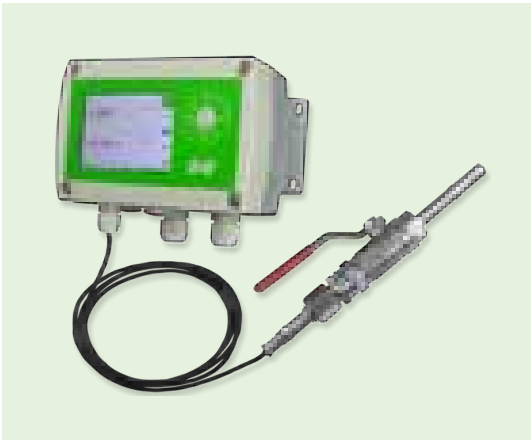
Measuring range – Humidity	0...100 % RH
Measuring range – Temperature	-40...180 °C (-40...356 °F)
Sensing element	heated for high humidity operation, E+E proprietary coating, Automatic sensor ReCovery (ARC)
Pressure range	0.01...100 bar (0.15...1450 psi)
Output analogue	0-1 V / 0-5 V / 0-10 V / 0-20 mA / 4-20 mA (3-wire)
Output digital	RS232 / RS485 with E+E industrial protocol



EE99-1
Humidity and Temperature Module for OEM Applications

Measuring range – Humidity	0...100 % RH
Measuring range – Temperature	-50...180 °C (-58...356 °F) short term up to 200 °C (392 °F)
Sensing element protection	E+E proprietary coating
Output	RH 4-20 mA (3-wire), T passive

+ Moisture in Oil



EE360
High-End Moisture in Oil Sensor

Measuring range	0...1 aw, -40...180 °C (-40...356 °F)
Pressure rating	up to 20 bar (290 psi)
TFT colour display	with data logging function
UL listed versions available	
Output analogue	0-1 V / 0-5 V / 0-10 V / 0-20 mA / 4-20 mA
Output digital	RS485 with Modbus RTU / Ethernet with Modbus TCP



EE364
Moisture in Oil Sensor

Measuring range	0...1 aw, -40...100 °C (-40...212 °F)
Pressure rating	up to 20 bar (290 psi)
Output analogue	4-20 mA
Output digital	Modbus RTU



EE381
Moisture in Oil Sensor

Measuring range – Oil temperature	-40...120 °C (-40...248 °F)
Measuring range – Water activity	0...1 aw
Pressure rating	up to 100 bar (1450 psi)
Outputs	0-10 V / 4-20 mA

+Pressure



EE600 Differential Pressure Sensor	
Measuring range	I: 0...250 / 500 / 750 / 1000 Pa II: 0...2500 / 5000 / 7500 / 10000 Pa
Accuracy	± 0.5 % FS
Working range – Temperature	-20...60 °C
Output analogue	0-5 V / 0-10 V / 0-20 mA / 4-20 mA
Output digital	Modbus RTU / BACnet MS/TP



EE610 Low Differential Pressure Sensor	
Measuring range	± 25 / ± 50 / ± 100 Pa, 0...100 Pa
Accuracy	± 0.5 Pa = 0.5 % FS
Working range – Temperature	-20...60 °C
Output analogue	0-5 V / 0-10 V / 0-20 mA / 4-20 mA
Output digital	Modbus / BACnet MS/TP

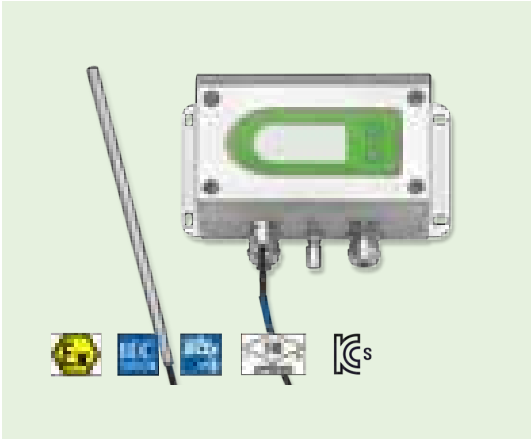
+Temperature



EE074 Temperature Probe with Modbus RTU	
Operating temperature	electronics: -40...80 °C (-40...176 °F) 70 & 105 mm probe: -40...80 °C (-40...176 °F) 305 mm probe: -70...105 °C (-94...221 °F)
Accuracy at 20 °C	± 0.1 °C (± 0.18 °F)
Output	Modbus RTU
Protection rating	IP68 (electrical Connection IP67)



EE10-M3 Room Temperature Sensor	
Operating temperature	-5...55 °C (23...131 °F)
Accuracy at 20 °C	± 0.3 °C (± 0.54 °F)
Output analogue	0-10 V / 4-20 mA
Output digital	Modbus RTU / BACnet MS/TP
Protection rating	IP30



EE300Ex-M3 Intrinsically Safe Temperature Sensor	
Measuring range	remote probe: -70...200 °C (-94...392 °F), wall mount: -40...60 °C (-40...140 °F)
Accuracy at 20 °C	± 0.2 °C (± 0,36 °F)
Pressure range	0.1...20 bar (1.45...290 psi)
Output	4-20 mA (2-wire)
Protection rating	IP65 / NEMA 4

+Temperature



EE431 Duct or Immersion Temperature Sensor	
Operating temperature	duct sensor: -40...110 °C (-40...230 °F) immersion sensor: -40...150 °C (-40...302 °F) electronics: -40...70 °C (-40...158 °F)
Accuracy active output at 20 °C	± 0.3 °C (± 0.54 °F)
Output analogue	0-10 V / 4-20 mA
Output digital	Modbus RTU / BACnet MS/TP
Protection rating	IP65 / NEMA 4
Probe length	65-300 mm



EE432 Cable Temperature Sensors	
Operating temperature	-30...105 °C (-22...221 °F)
Protection rating	IP67 / NEMA 4
Insulation resistance	typ. > 100 MΩ at 20 °C (68 °F)
Probe length	160 mm
Cable length	1 m



EE441 Strap-on Temperature Sensor	
Operating temperature	-40...70 °C (-40...158 °F)
Accuracy active output at 20 °C	± 0.3 °C (± 0.54 °F)
Output analogue	0-10 V / 4-20 mA
Output digital	Modbus RTU / BACnet MS/TP
Protection rating	IP65 / NEMA 4

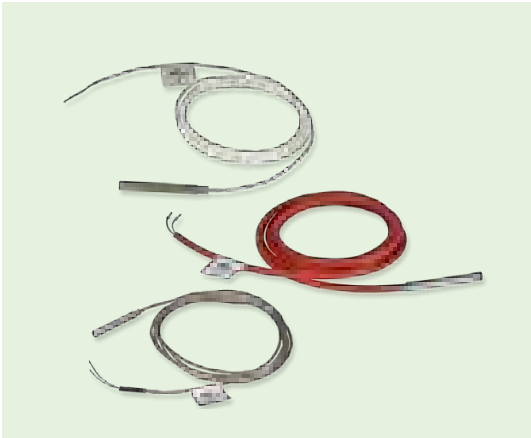
+Temperature



EE451 Wall Mounted Temperature Sensor	
Operating temperature	-40...70 °C (-40...158 °F)
Accuracy active output at 20 °C	± 0.3 °C (± 0.54 °F)
Output analogue	0-10 V / 4-20 mA
Output digital	Modbus RTU / BACnet MS/TP
Protection rating	IP65 / NEMA 4
Supply	24 V AC/DC



EE461 Cable Temperature Sensors	
Operating temperature	-30...105 °C (-22...221 °F)
Protection rating	IP67 / NEMA 4
Insulation resistance	typ. > 100 MΩ at 20 °C (68 °F)
Wiring	2-wire / 4-wire
Cable length	0.5-6 m



EE462 Cable Temperature Sensors	
Cable material	Glass fiber / PTFE / silicone
Operating temperature	Glass fiber: 0...350 °C (32...662 °F) PTFE: -20...260 °C (-4...500 °F) Silicone: -60...180 °C (-76...356 °F)
Cable length	2 m, 3 m
Protection rating	IP67
Insulation resistance	typ. > 100 MΩ at 20 °C (68 °F)

+Temperature



EE471
Temperature Sensor with Remote Probe

Operating temperature	remote probe: -30...105 °C (-22...221 °F) electronics: -30...70 °C (-22...158 °F)
Accuracy active output at 20 °C	± 0.3 °C (± 0.54 °F)
Output analogue	0-10 V / 4-20 mA
Output digital	Modbus RTU / BACnet MS/TP
Probe protection rating	IP67 / NEMA
Cable length	0.5-10 m

+Instruments & Systems



EE242
Base Station of the Wireless Sensor Network

Transmission frequency	2.4 GHz
Transmission protocol	IEEE 802.15.4
Transmission power	10 mW
Range	1000 m in open field
Output	Analogue, Modbus TCP, Modbus RTU



EE244
Industrial Wireless Transmitter
or Router with External Sensing Probes

Number of sensing probes	1, 2 or 3
Probe extension cable length, max.	10 m
Antenna	External, remote up to 2 m
Protection rating	IP65 / NEMA 4
Supply	External supply or batteries



EE245
Room Wireless Sensor for Temperature,
Relative Humidity and CO₂

Working range – CO ₂	0...2000 / 0...5000 ppm
Working range – Humidity	10...90 % RH
Working range – Temperature	-5...55 °C (23...131 °F)
Modularity	Replaceable RH/T, CO ₂ sensing modules
Supply	External supply or batteries

+ Instruments & Systems



Humlog 20
Data logger for Humidity, Temperature, Air Pressure and CO₂

Measuring range – RH	10...95 % RH
Measuring range – T	-20...50 °C (-4...120 °F)
Measuring range – CO ₂	0...5000 ppm
Measuring range – p	300...1300 hPa
Interface	USB, LAN (ethernet)



Humor 20
High-precision Humidity Calibrator

Operation principle	Dual pressure rector
Calibrator class	Primary standard
Calibration range	10...95 % RH
Accuracy	±0.3-0.9 % RH
Stabilization time	< 3 min/measuring point



Oilport 30
Moisture in Oil Hand-held

- For transformer, lubrication, hydraulic and engine oil
- Water activity (aw), water content (x) and temperature (T) measurement
- Stores up to 10 sets of oil specific parameters
- Data logging function for up to 2 million measured values
- Carry case for hand-held, probes and accessories

+ Instruments & Systems



Omniport 30
Multifunctional Hand-held

- Wide choice of sensing probes for relative humidity, temperature, CO₂ and air velocity
- Data logging with time and date stamp
- Internal memory for 2 million measured values
- Capacitive TFT touch-screen
- Free data management software



Sigma 05
Host Device for Sensing Probes with Modbus RTU Interface

Number of sensings probes (max)	3
Number of measurands (max)	5
Probe recognition and setup	automatic / manual
Output analogue	0-1 V / 0-2.5 V / 0-5 V / 0-10 V / 0-20 mA / 4-20 mA (3-wire)
Protection rating	IP65 / NEMA 4

E+E Elektronik – Your Partner in Sensor Technology

E+E Elektronik GmbH, with headquarters in Engerwitzdorf, Austria, has been established in 1979 and is part of Dr. Johannes Heidenhain group.

Diverse.

E+E Elektronik is a leading manufacturer of elements and sensors for a multitude of physical quantities and applications. Data loggers, hand-held meters as well as calibration systems and services round up the product portfolio.

Reliable.

Best quality made in Austria, high accuracy and outstanding long-term stability, together with advanced understanding of customer specific requirements are the main competitive advantages of E+E Elektronik.

Versatile.

Measuring devices from E+E Elektronik are used all over the world in most diverse industries such as building automation, meteorology, agriculture, food, pharmaceutical, process control or automotive.

Flexible.

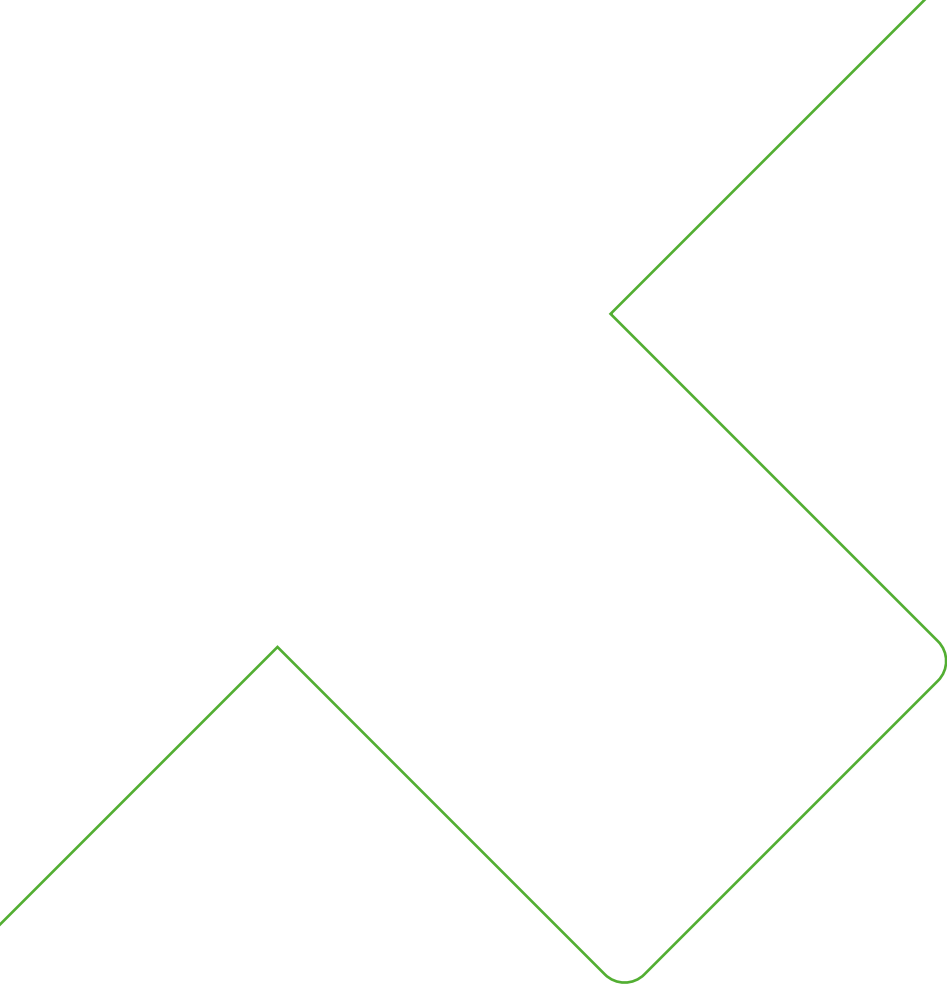
With own clean room sensor manufacturing, in-house design of state of the art electronics and highest competence in calibration, E+E Elektronik is the ideal partner for OEM customers.

Certified.

The E+E Elektronik quality assurance system is certified according to ISO 9001 and IATF 16949. The company also complies with the environmental standard ISO 14001. The in-house calibration laboratories are accredited according to DIN EN ISO/IEC 17025.

Global.

E+E Elektronik sales subsidiaries are located in China, Germany, France, Italy, Korea and the USA. Additionally, E+E Elektronik maintains a worldwide network of distribution partners.



—
your partner
in sensor
technology.