



**First Fix**

شركة التركيبات الأولية للأعمال الكهربائية المحدودة  
The Fundamental Installation For Electric Work



‘BELIEVE  
**THE SKY IS  
NOT OUR LIMIT**’

# ABOUT FIRST FIX

**CLASS 1**

Saudi  
Contractor

**TOP 1**

Biggest Saudi  
MEP Contractor  
According to MEED

**+11,000**

Employees

**+200**

Awarded  
Projects

**First Fix** is a local market dealer delivering world class projects via end to end solutions that provide integrated design, engineering and construction disciplines of mechanical, electrical & plumbing (MEP) through people, innovation and passion.

## MISSION

Providing world class services for our current & future clients.

## VISION

To redefine construction excellence in the GCC by leading with innovation, embracing sustainability, and consistently exceeding client expectations.



## CORE VALUES



### Innovation

Anticipating challenges and coming up with best smart solutions tailored specifically for each project.

### Sustainability

Solving environmental challenges to serve our communities and protect our world.



### Excellence

We aspire to be the best in everything we do. No matter how urgent or challenging the job is, our team is the best and they are ready for any challenge.

### Relationships

Building long term relationships with our clients, suppliers, team members and partners through trust, commitment, collaboration and respect.

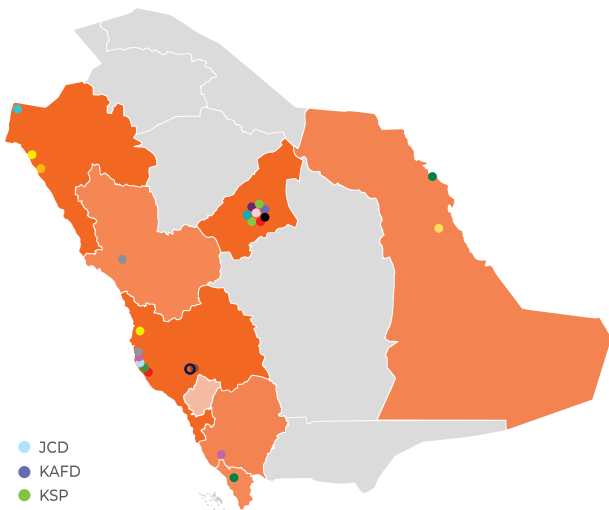




# OUR PRESENCE

## COMPLETED PROJECTS

- Al Moosa Rehab And LTC Facility, Al Ahsa
- Jazan Refinery Utilities
- West Pier Facilities Upgrade Ras Tanura
- Abha Regional Airport – Current Terminal Expansion
- KAIA Data Centre, Jeddah
- NEOM Bay Airport Upgrade
- JCD, Jeddah - Site Preparation and Marine Infrastructure
- New Jeddah Downtown (JCD)
- Jeddah Historical District
- KAFD Subterranean Road & Utility Tunnels
- KAFD Temporary Parking
- KAFD - Pop up Restaurant
- KAFD CP 04b - Baytur
- Masharef
- Ministry of Defense
- Security Forces Medical Centre, Riyadh
- Elegance Tower, Riyadh
- Muvi Cinemas
- Neom Base Economy Assets (NC2)
- Al Moosa Specialist Hospital
- ARAMCO
- ARAMCO
- GACA
- GACA
- GACA
- JCD
- JCD
- JHD
- KAFD
- KAFD
- KAFD
- KAFD
- Kinan
- Ministry of Defense
- Ministry of Interior
- Ministry of Transport
- MUVI
- NEOM
- Red Sea Week Event
- King Abdullah Port, Rabigh
- Riyadh Metro
- KKIA Dutyfree Project T3 & T4
- KKIA - Fire and Water Piping Network
- Ummahat Alshaykh Hotel #12 - Dry and Wet Services
- Boulevard - Hiteen District, Riyadh
- World Defense Show 2022
- Jeddah Yacht Club
- VIA Riyadh
- Super Dome Jeddah
- Strategic Reservoir & Tanks, Taif
- Medical Village, Riyadh
- The Walk - Pump Station for Administration 2 & 3
- KAEC Exhibition Centre
- King Abdul Aziz Road Development (KAAR)
- Kingdom Tower
- Misk Foundation
- Saudi Customs Smart Gate Phase 1
- NEOM
- Ports Development Co.
- Port ADA
- Riyadh Airports Co.
- Riyadh Airports Co.
- Red Sea Global
- SELA
- SELA
- SELA
- SELA
- SELA
- SWCC
- The Walk
- The Walk
- KAEC
- Jeddah Economic Company
- Misk



## ONGOING PROJECTS

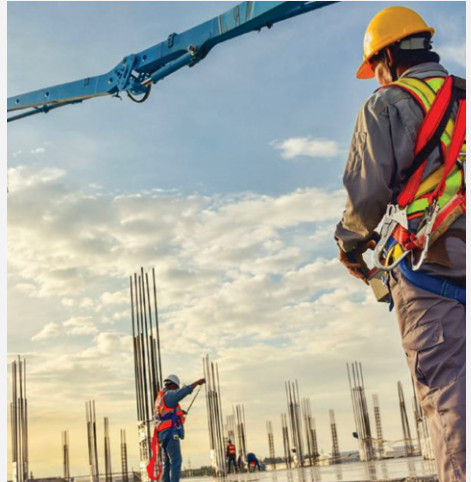
- JCD Phase 2
- KAFD MEP Enhancement - 16 Parcels
- King Salman Park - Royal Arts Complex (Enabling Works)
- KKIA Cargo Apron Project
- KKIA Irrigation Network
- Amaala Integrative Wellness & Retail Village
- Amaala Rosewood Hotel & Resort
- Shura West Hotel 2, 3 & 4
- Design & Build Shura Infra
- JCD
- KAFD
- KSP
- Riyadh Airports Co.
- Riyadh Airports Co.
- Red Sea Global
- Red Sea Global
- Red Sea Global
- Red Sea Global

# HEALTH, SAFETY & SUSTAINABILITY

We are committed to protect our people and the contractors and suppliers who support our operations. The presence of a safe working environment underlies and sustains the performance of our entire workforce.

We're compliant with all legislation and are committed to doing all we can to ensure the health and safety of our employees, sub-contractors and public. This includes:

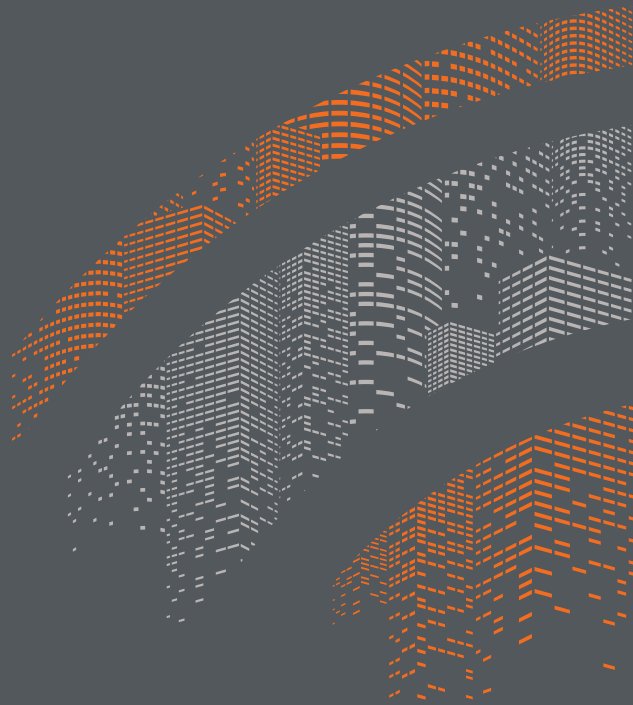
- Implementation of continuous improvement plans
- Bi-annual review of health and safety material by senior team
- Site-specific health and safety plans
- Regular employee consultation, training and supervision
- Employees within the team appointed to positions of responsibility
- Identification and management of hazards
- Scheduled inspecting and maintenance of machinery and equipment.
- Regular safety audits by Health and Safety Manager, Site Supervisors and Directors



- Our approach to sustainability is holistic; we aim to be distinguished for pioneering in sustainable construction and utilize the latest technologies to increase efficiency and minimize our negative environmental footprint.
- We address all social, environmental, and economic areas of sustainability and define our impacts in alignment with Sustainable Development Goals.
- We are defining our sustainability opportunities by assessing our impacts across our value chain and operation processes.
- We incorporate principles of environmental conservation, resource efficiency, and social equity throughout the entire lifecycle of a construction project, from planning and design to construction, operation, maintenance, and eventual demolition or deconstruction.



**SUSTAINABLE  
DEVELOPMENT  
GOALS**



**JEDDAH HEAD OFFICE :** 3355 Sari, Al Khalidiyah Dist., Jeddah 23423-8940

**RIYADH OFFICE :** 4162 Abi Al Asbat, Al Olaya, Riyadh 12311-6324

[www.firstfix-ksa.com](http://www.firstfix-ksa.com) | [info@firstfix-ksa.com](mailto:info@firstfix-ksa.com) | [f](#) [@](#) [in](#) firstfix.ksa | 9200 09569

